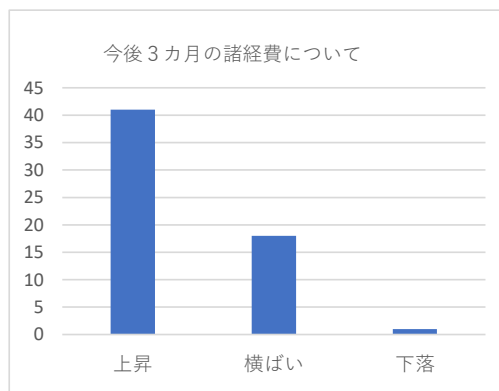
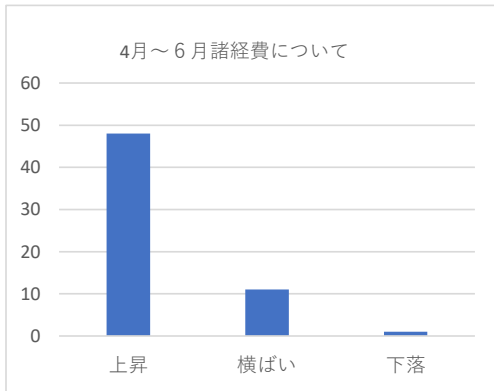
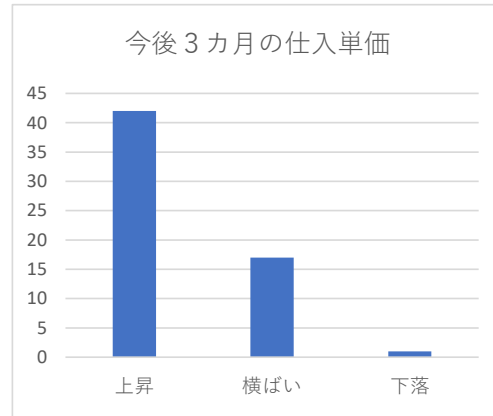
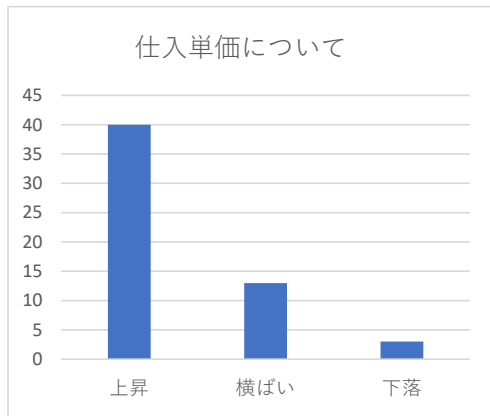
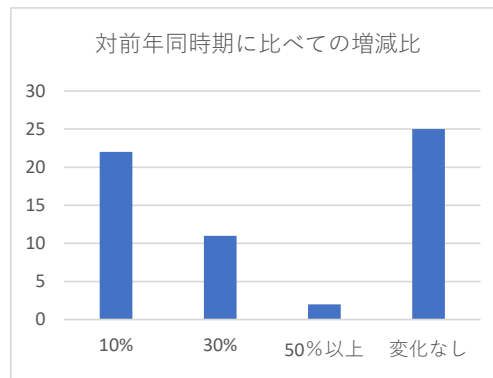
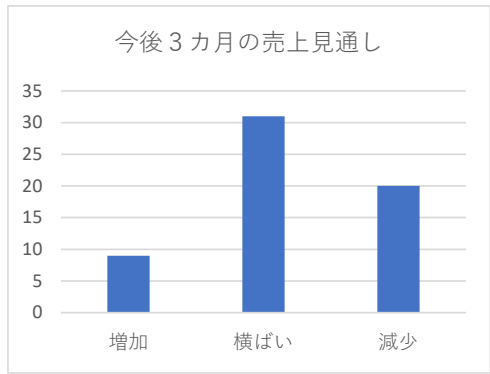
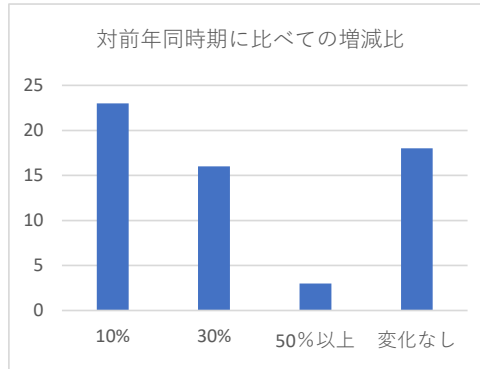
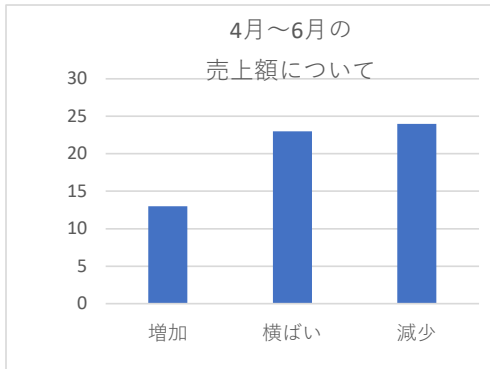


令和5年度 景気動向調査結果（全体）

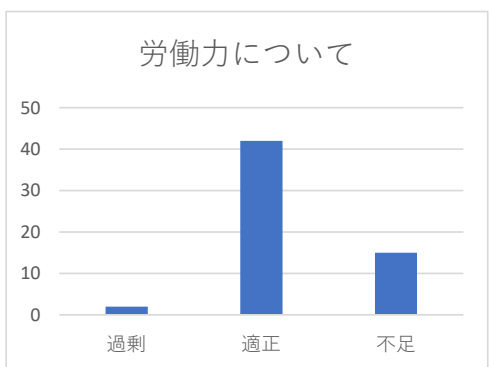
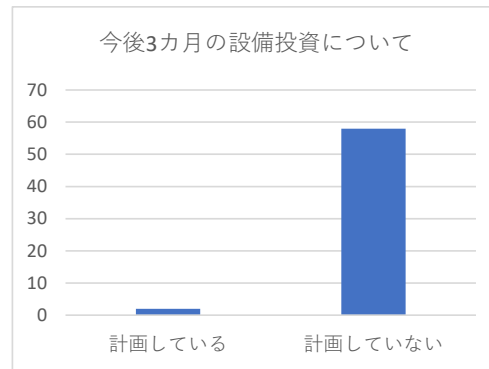
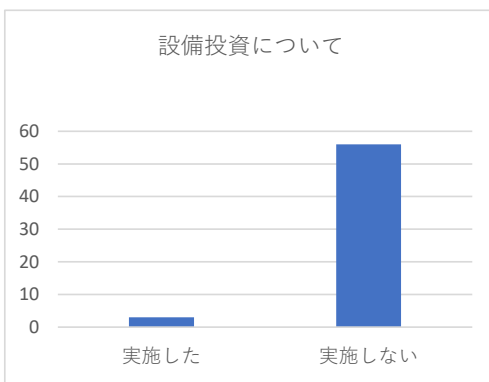
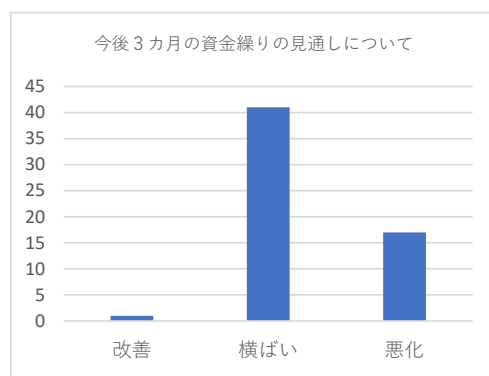
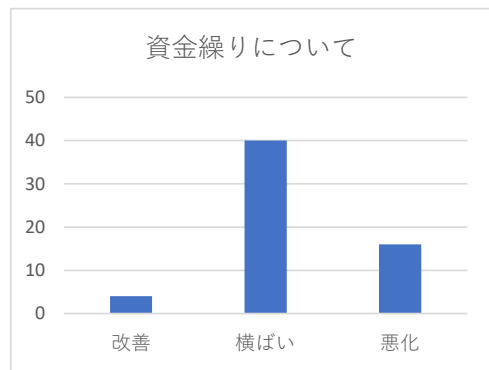
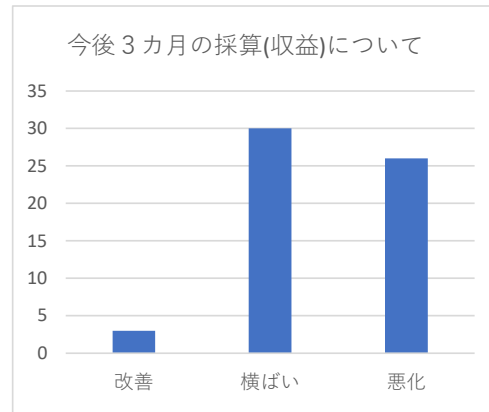
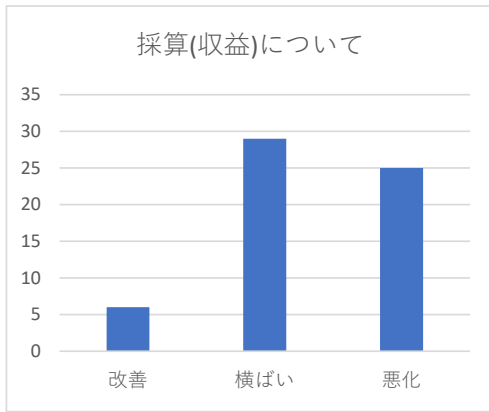
実施時期 令和5年7月 10日～ 25日

調査方法 職員によるヒアリング調査

対象者数 60者 回答数 60者



(全体)



#### 経営課題

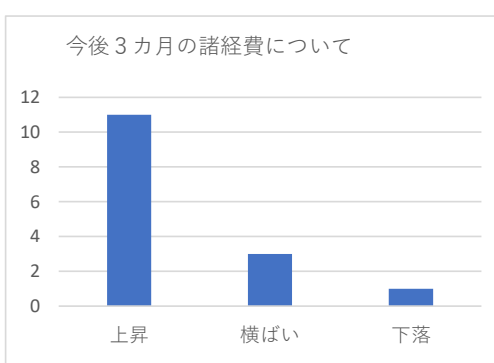
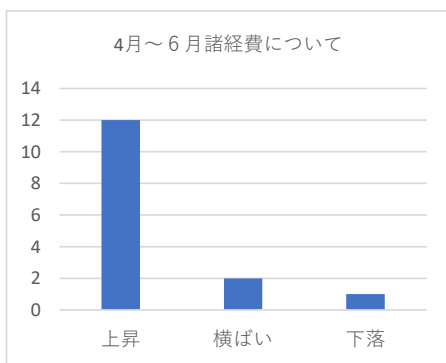
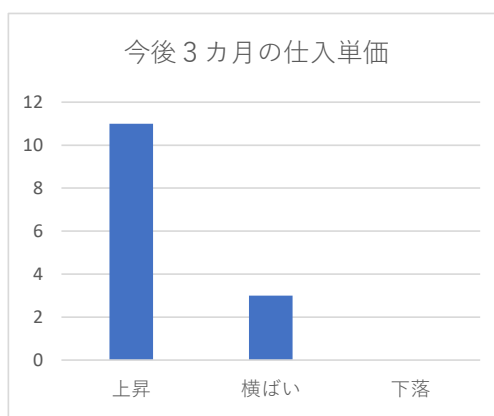
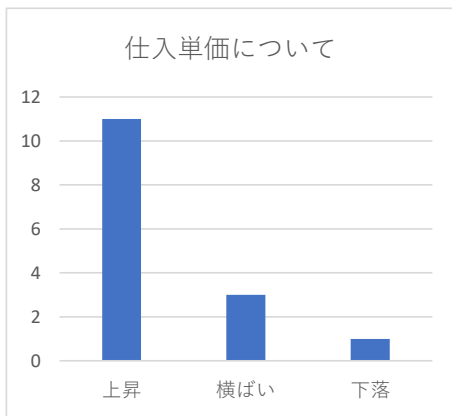
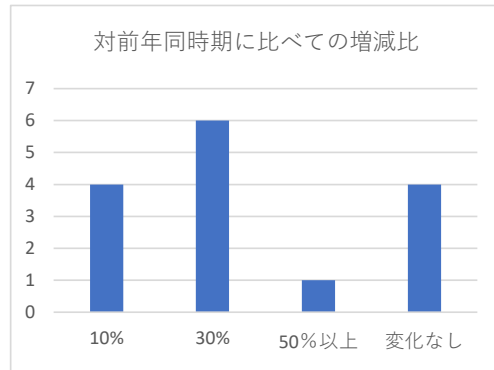
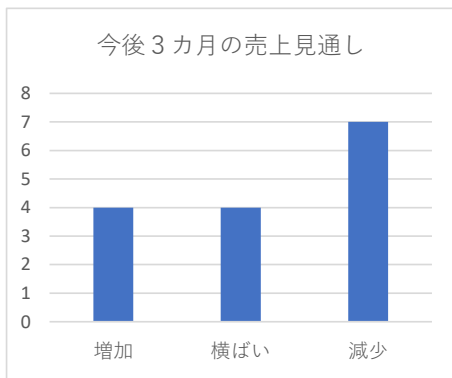
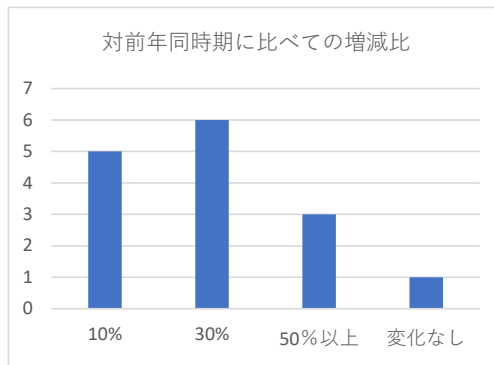
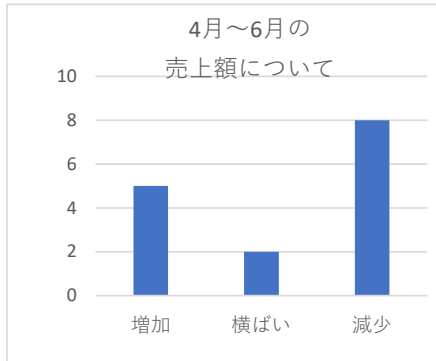
1.需要の低迷	14
2.販売価格の低下	2
3.原材料の高騰	33
4.人件費の増加	2
5.取引条件の悪化	3
6.同業者との競争激化	6
7.人材確保難	6
8.経営者の高齢化	20
9.後継者難	7

令和5年度 景気動向調査結果（建設業）

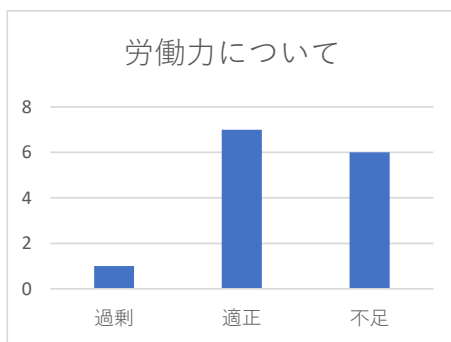
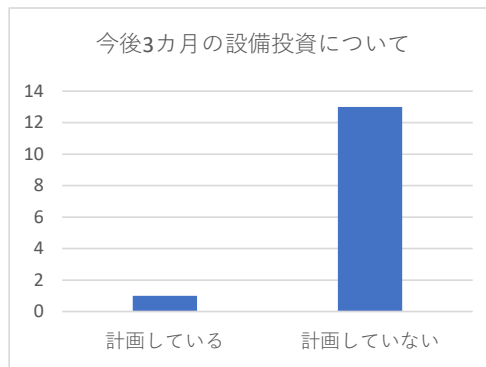
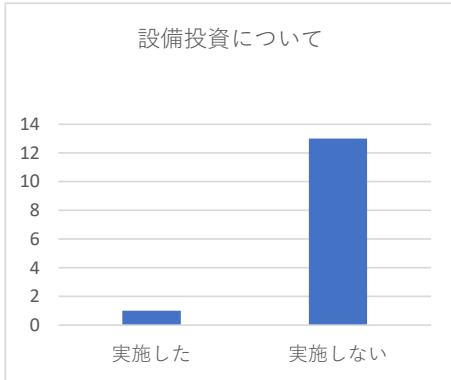
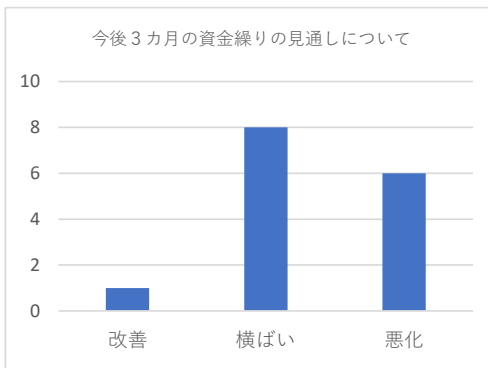
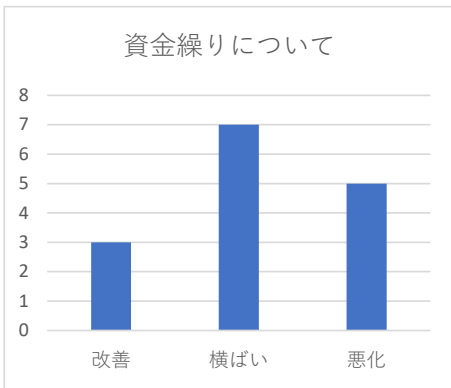
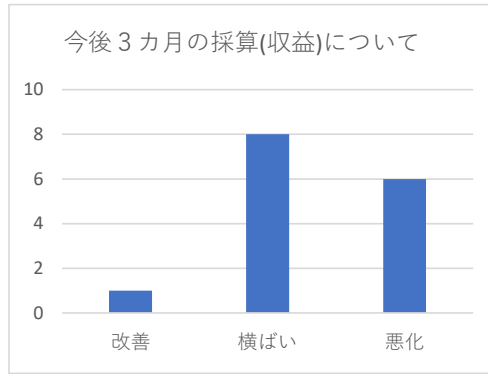
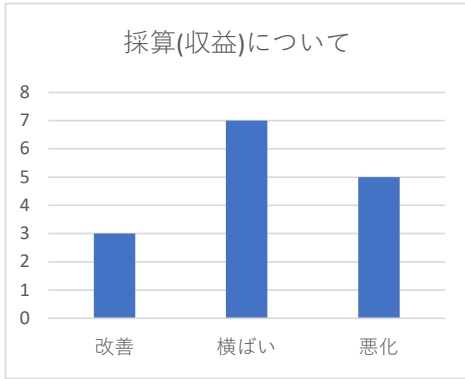
実施時期 令和5年 7月 10日～ 25日

調査方法 職員によるヒアリング調査

回答数 15者



(建設業)



経営課題

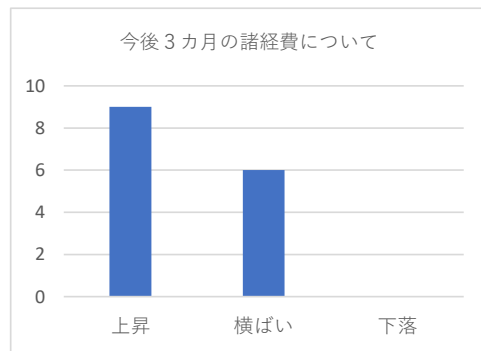
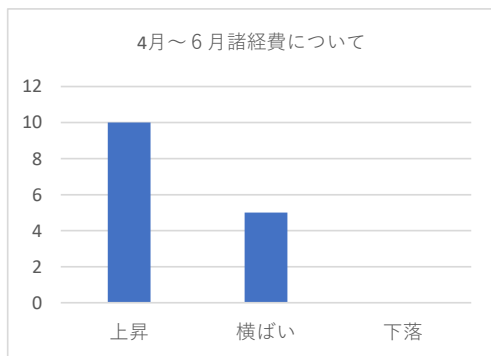
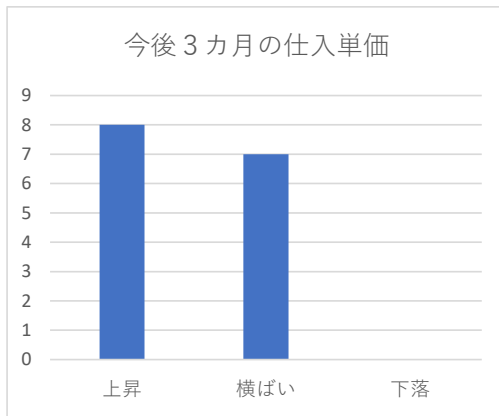
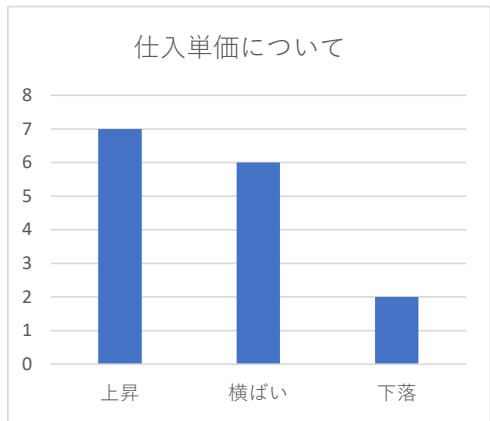
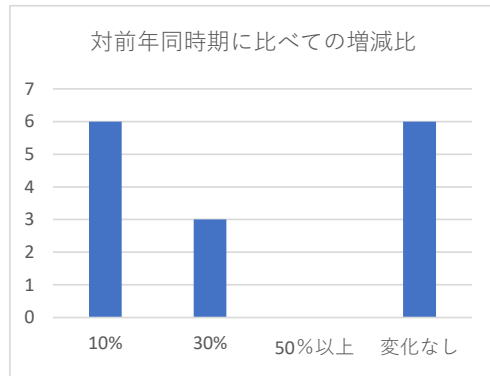
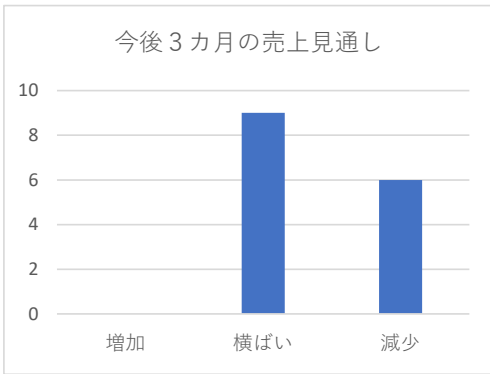
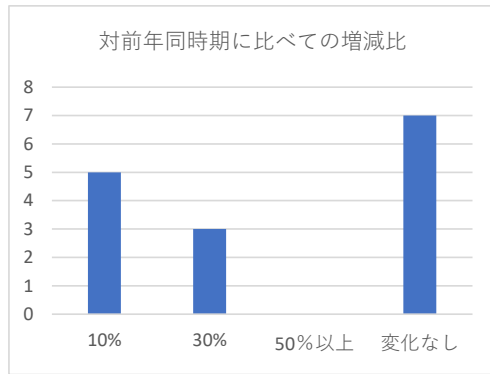
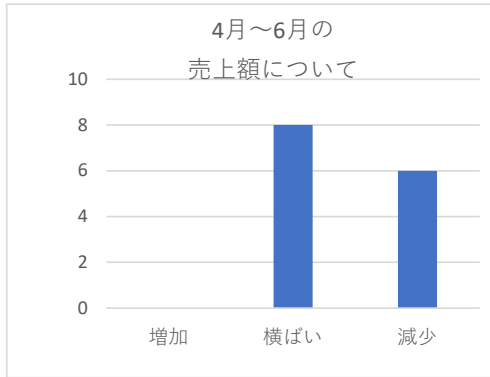
1.需要の低迷	2
2.販売価格の低下	0
3.原材料の高騰	8
4.人件費の増加	1
5.取引条件の悪化	2
6.同業者との競争激化	2
7.人材確保難	4
8.経営者の高齢化	4
9.後継者難	1

令和5年度 景気動向調査結果（卸・小売業）

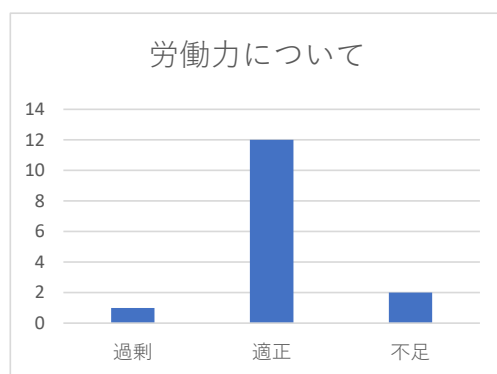
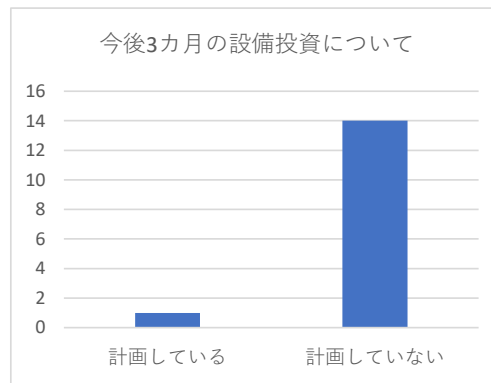
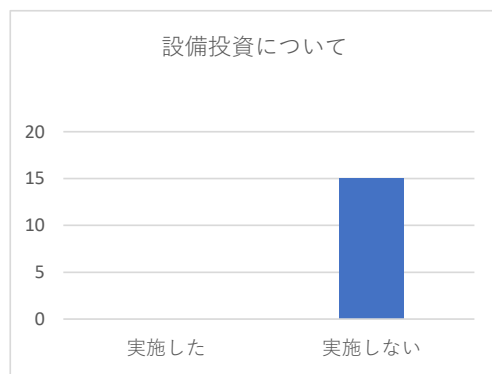
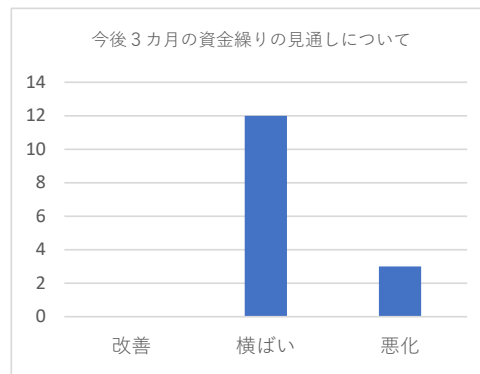
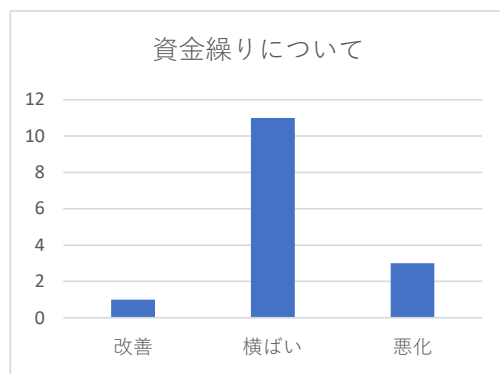
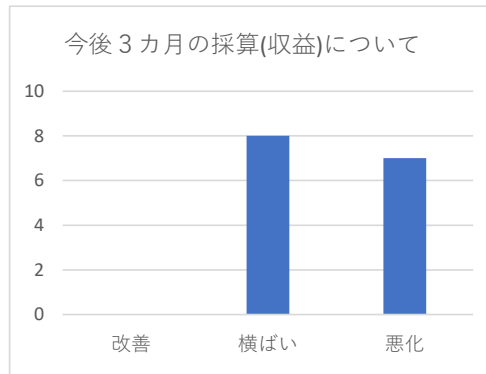
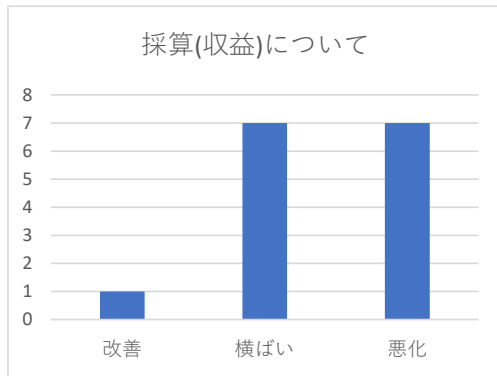
実施時期 令和5年 7月 10日～ 25日

調査方法 職員によるヒアリング調査

回答数 15者



(卸・小売業)



経営課題

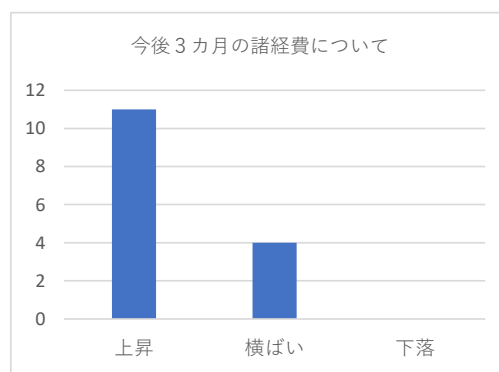
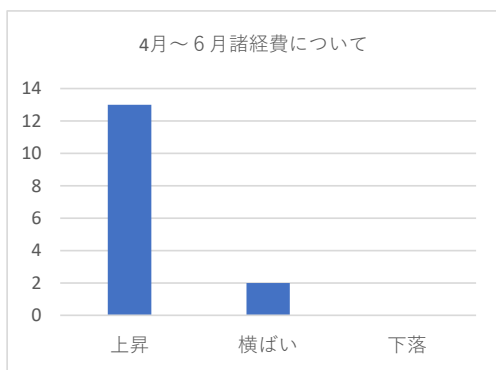
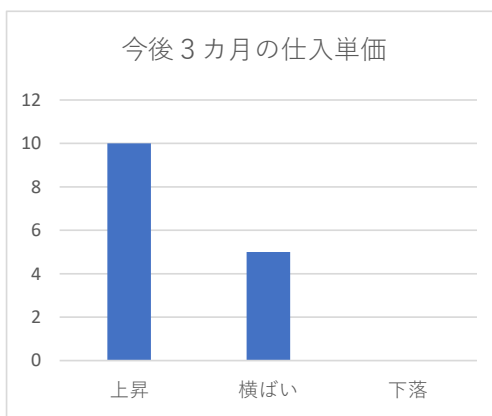
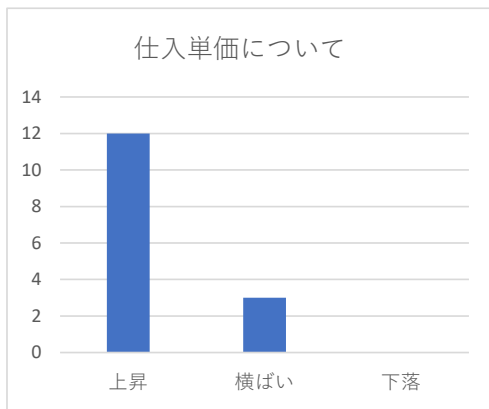
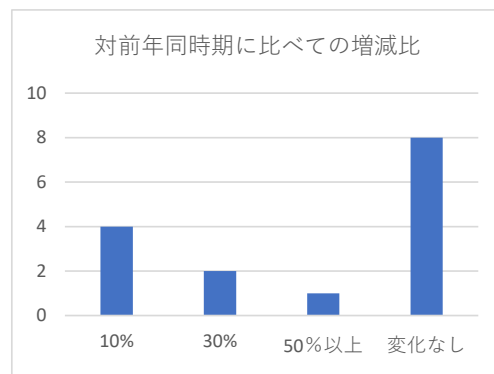
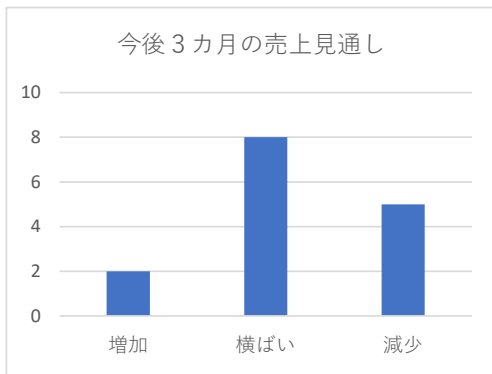
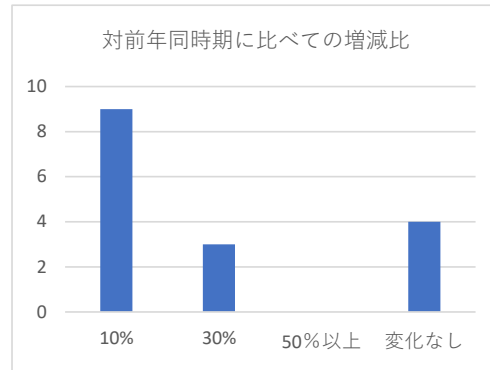
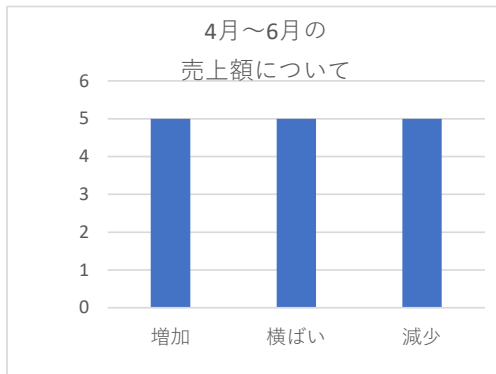
1.需要の低迷	8
2.販売価格の低下	1
3.原材料の高騰	5
4.人件費の増加	0
5.取引条件の悪化	1
6.同業者との競争激化	1
7.人材確保難	0
8.経営者の高齢化	7
9.後継者難	2

令和5年度 景気動向調査結果（製造業）

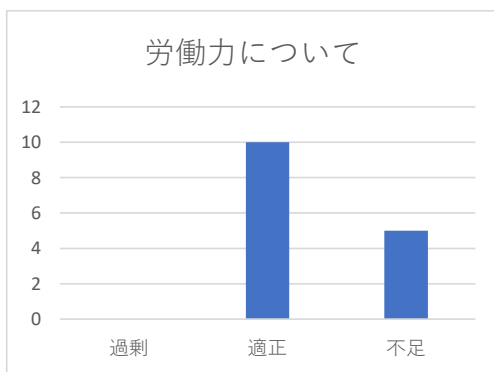
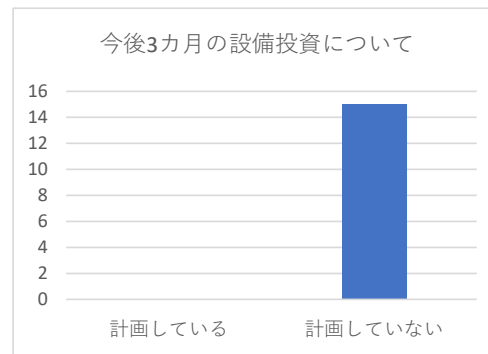
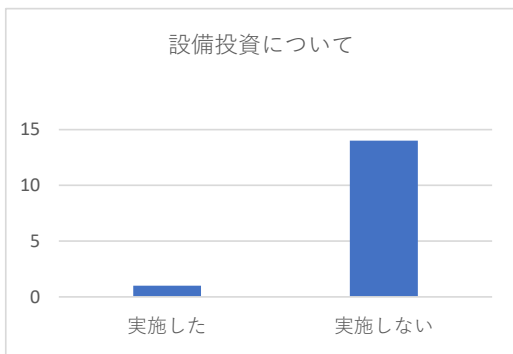
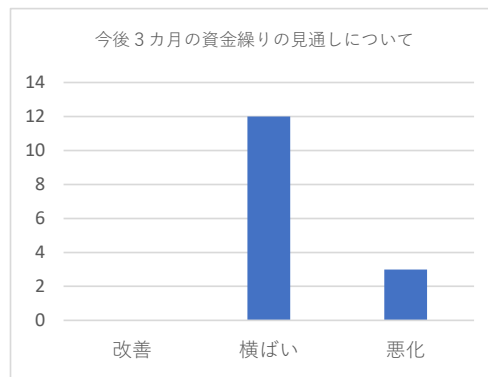
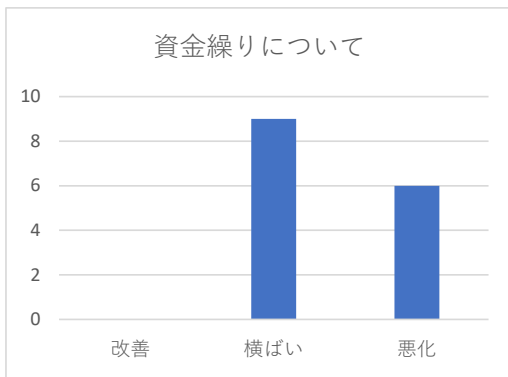
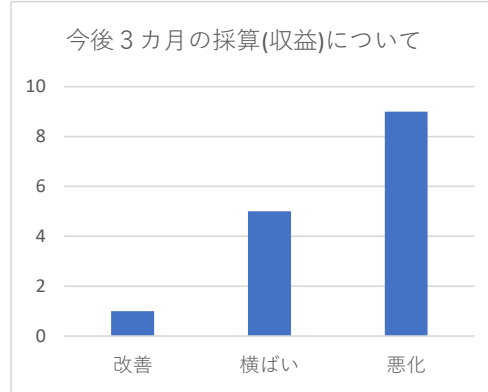
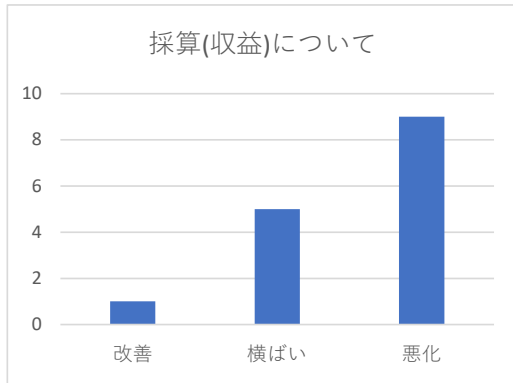
実施時期 令和5年7月10日～25日

調査方法 職員によるヒアリング調査

回答数 15者



(製造業)



経営課題

1.需要の低迷	3
2.販売価格の低下	1
3.原材料の高騰	12
4.人件費の増加	0
5.取引条件の悪化	0
6.同業者との競争激化	3
7.人材確保難	2
8.経営者の高齢化	3
9.後継者難	2

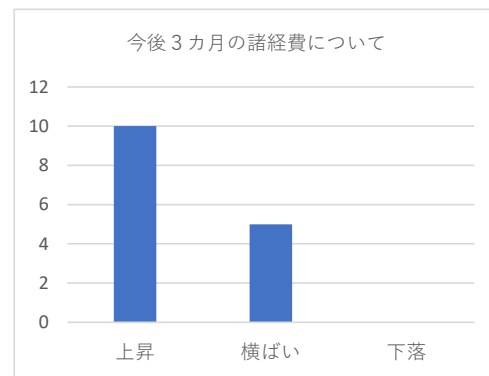
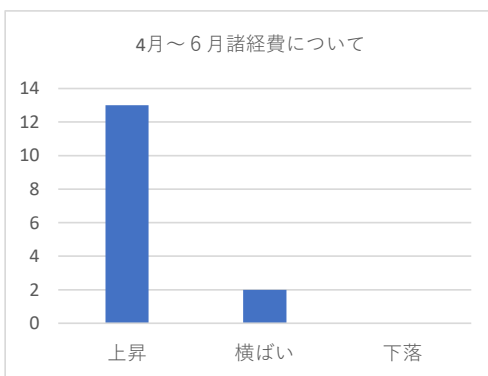
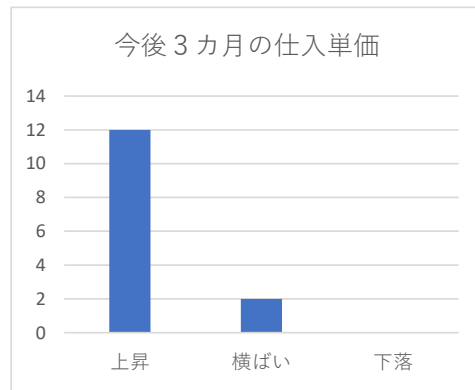
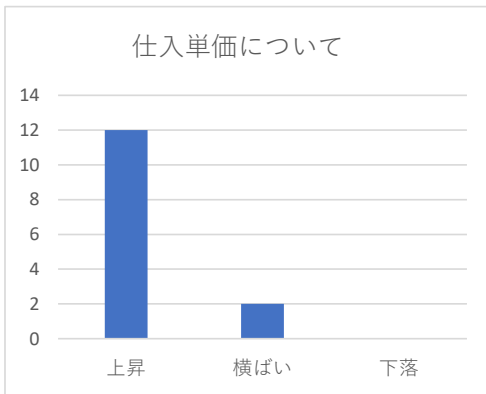
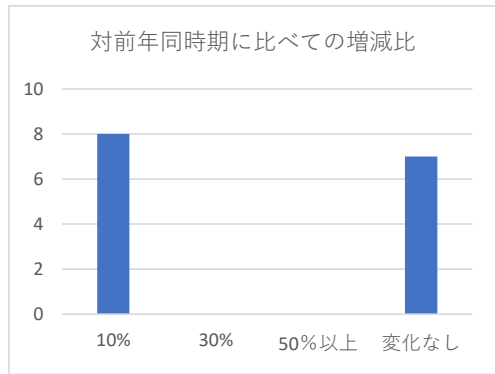
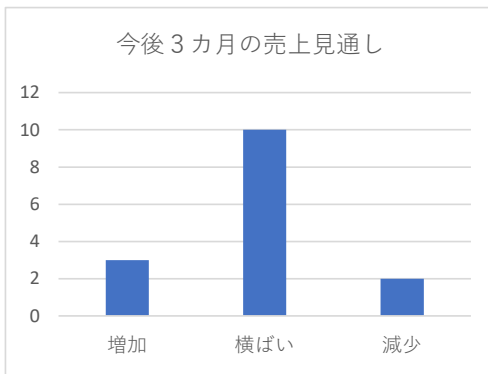
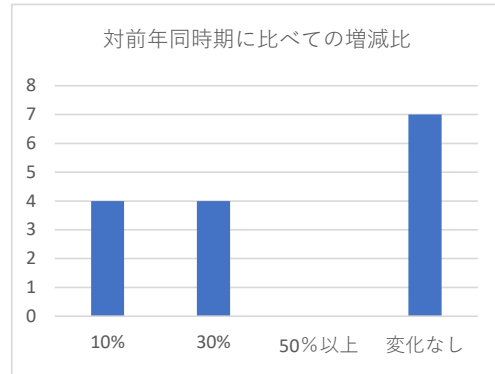
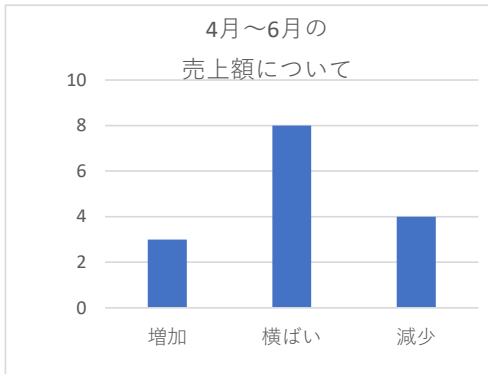


令和5年度 景気動向調査結果（サービス）

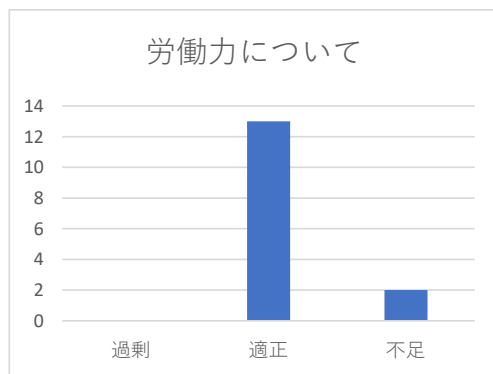
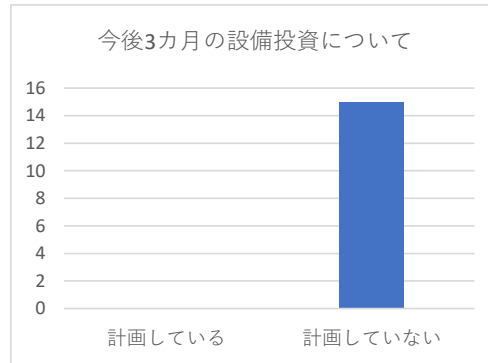
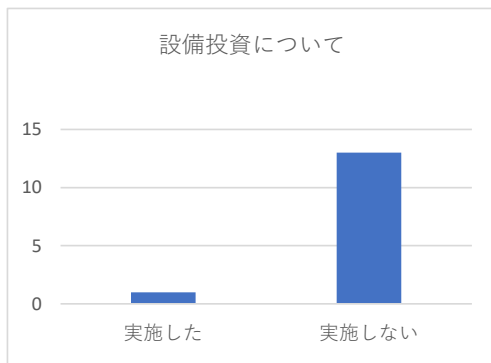
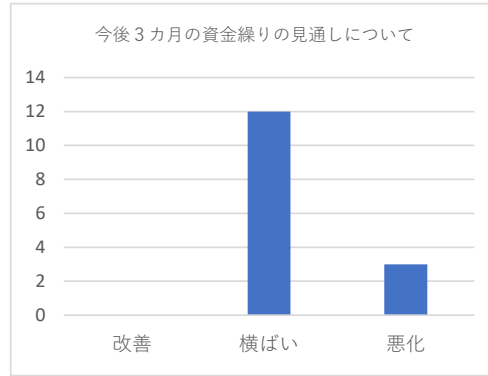
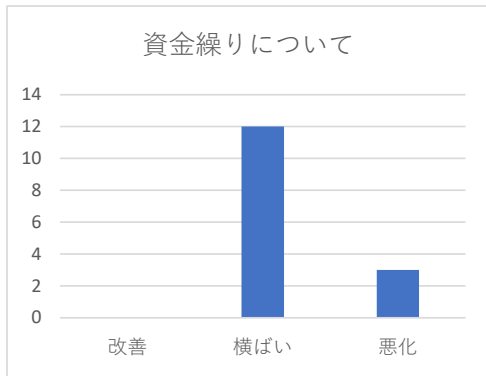
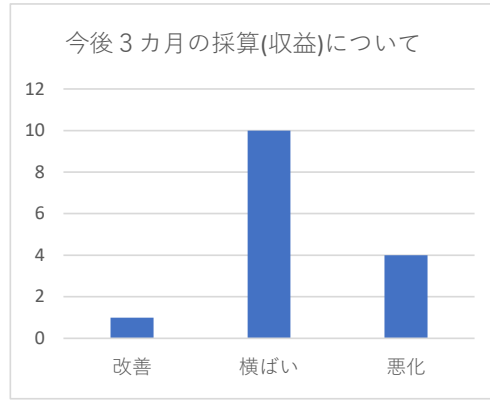
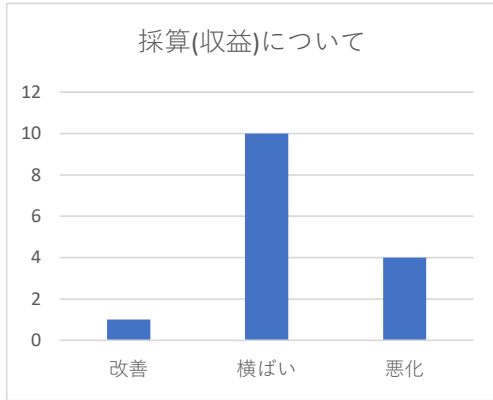
実施時期 令和5年 7月 10日～ 25日

調査方法 職員によるヒアリング調査

回答数 15者



(サービス業)



経営課題

1.需要の低迷	1
2.販売価格の低下	0
3.原材料の高騰	9
4.人件費の増加	1
5.取引条件の悪化	0
6.同業者との競争激化	0
7.人材確保難	0
8.経営者の高齢化	6
9.後継者難	1