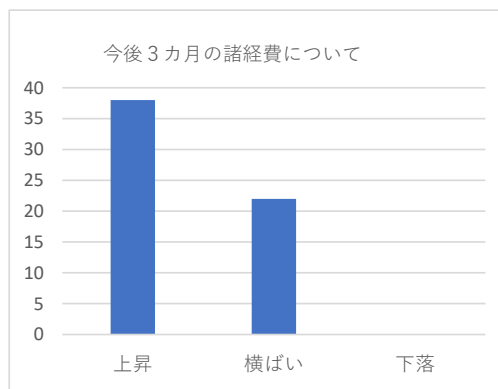
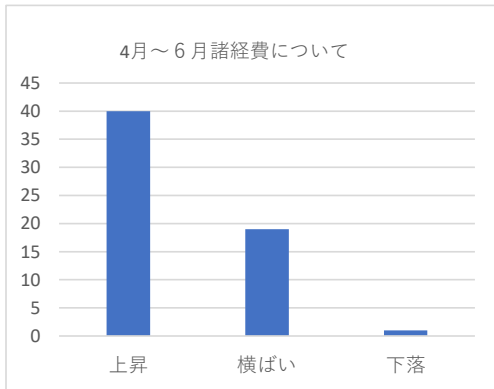
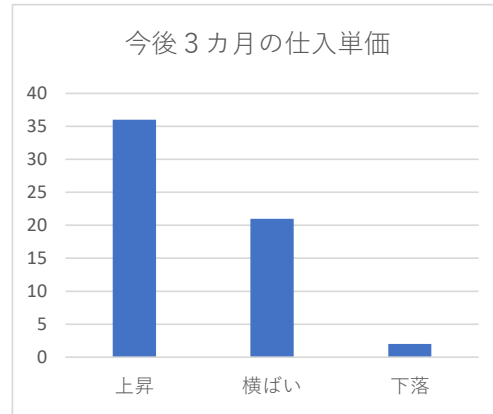
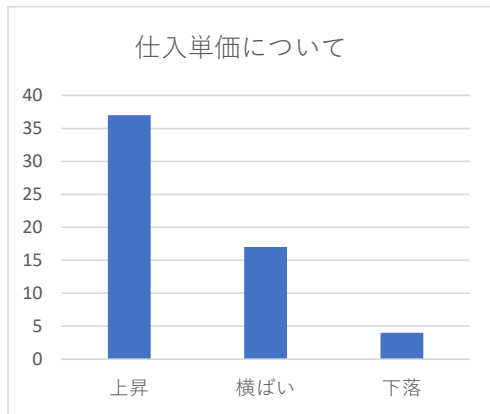
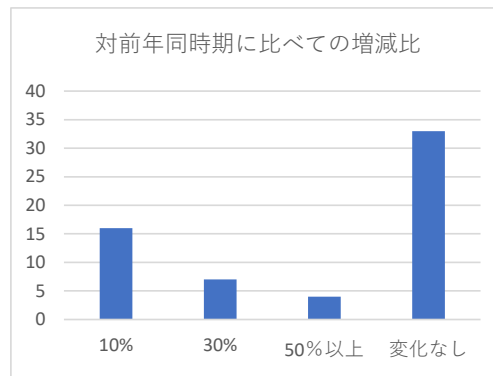
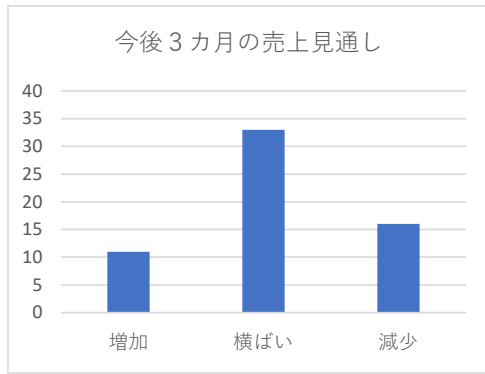
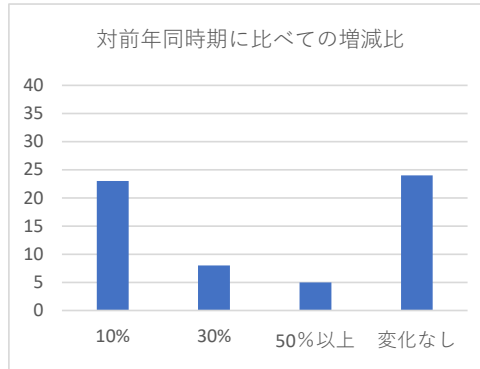
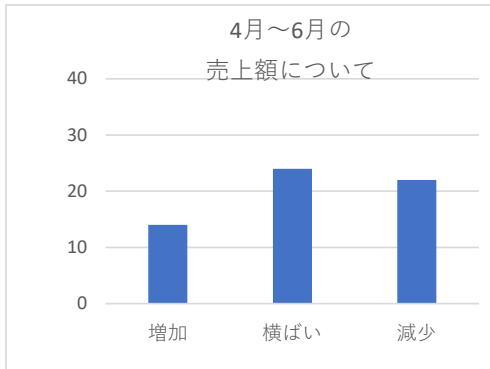


令和6年度 景気動向調査結果（全体）

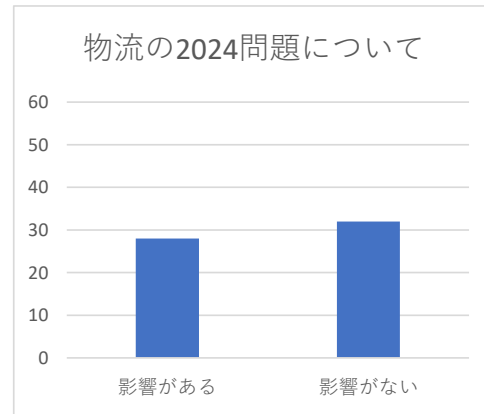
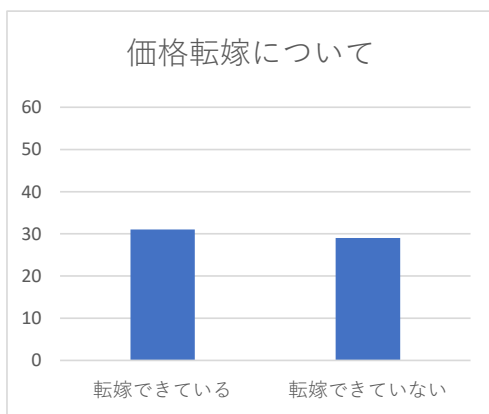
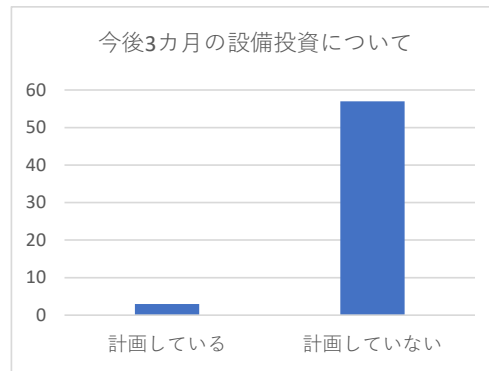
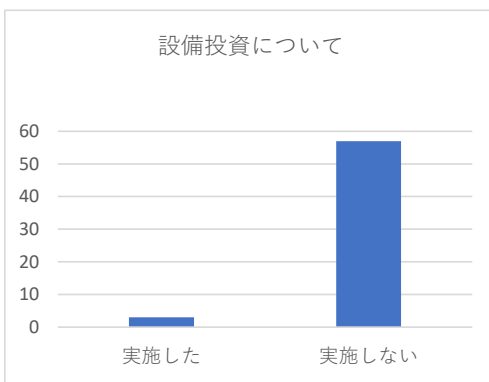
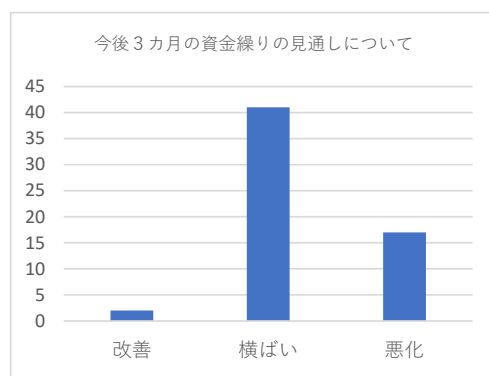
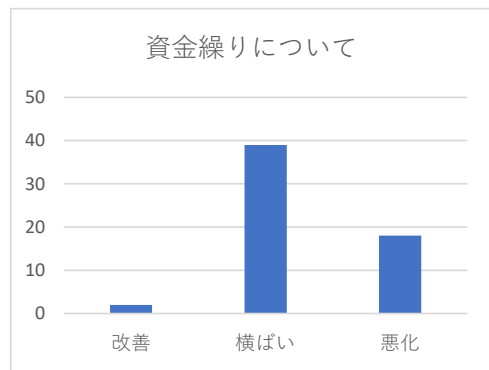
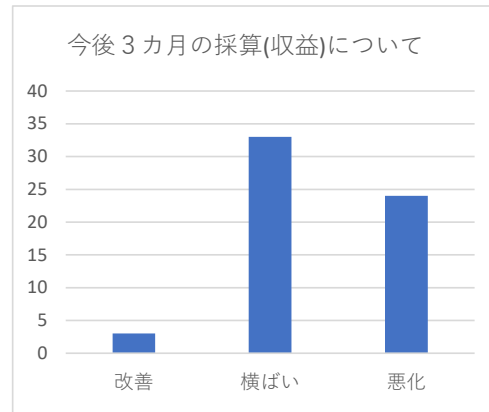
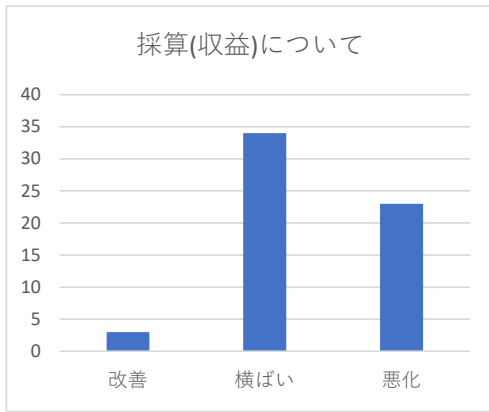
実施時期 令和6年7月1日～19日

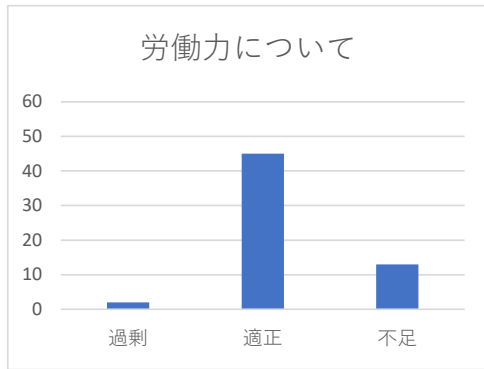
調査方法 職員によるヒアリング調査

対象者数 60者 回答数 60者



(全体)





経営課題

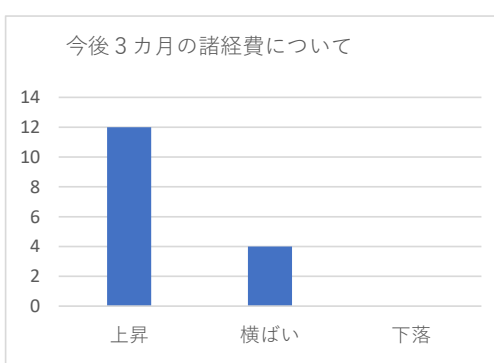
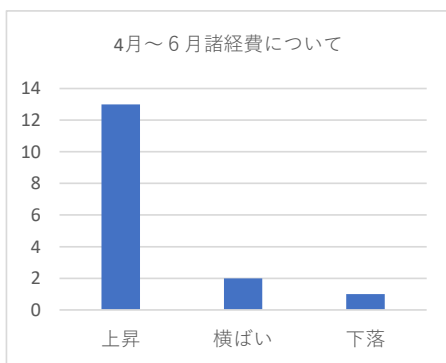
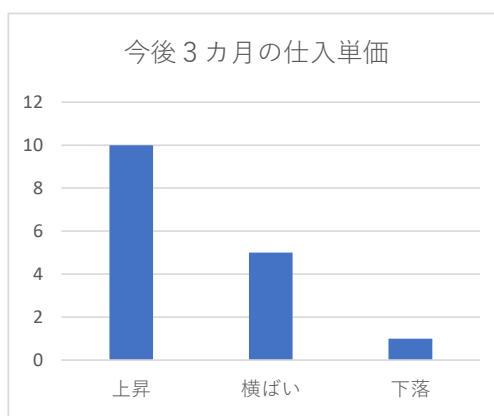
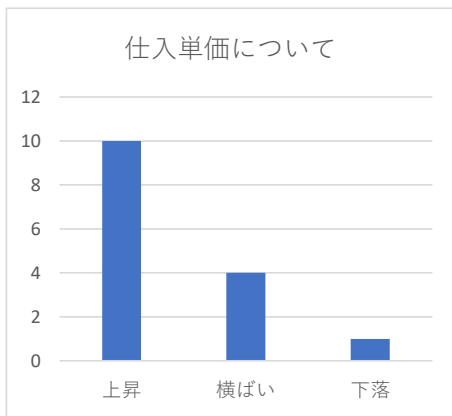
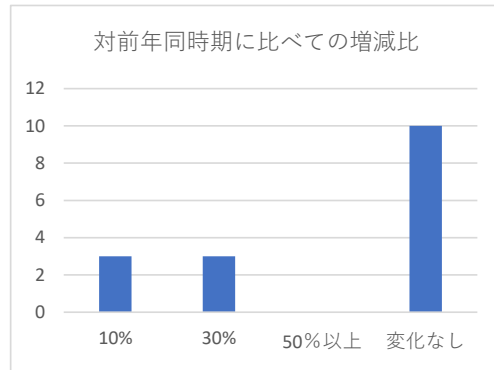
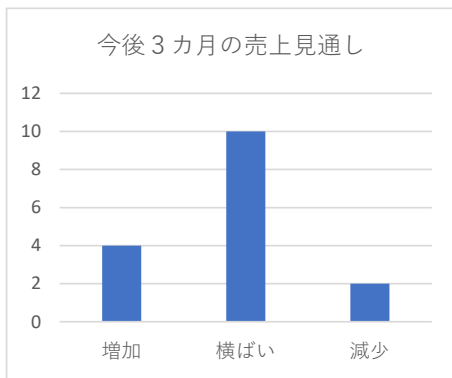
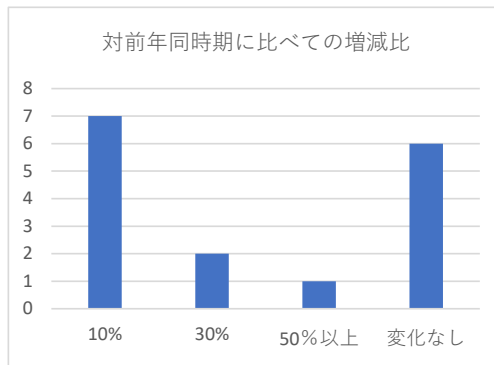
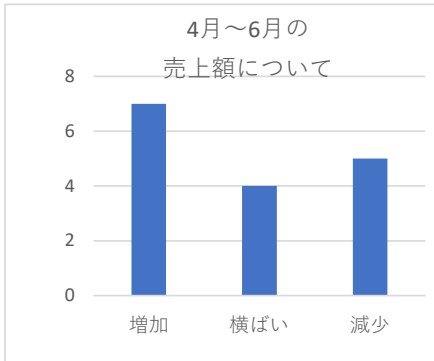
1.需要の低迷	20
2.販売価格の低下	5
3.原材料の高騰	29
4.人件費の増加	2
5.取引条件の悪化	2
6.同業者との競争激化	11
7.人材確保難	7
8.経営者の高齢化	11
9.後継者難	9

令和6年度 景気動向調査結果（建設業）

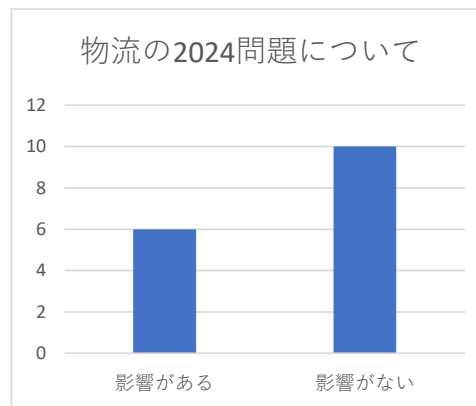
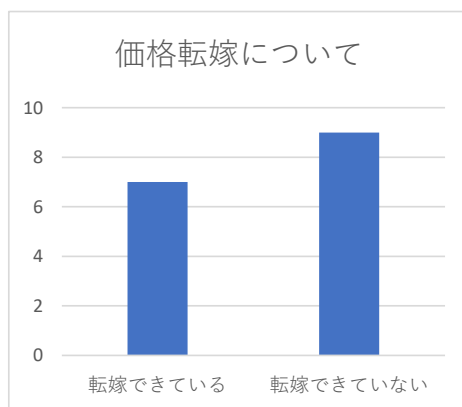
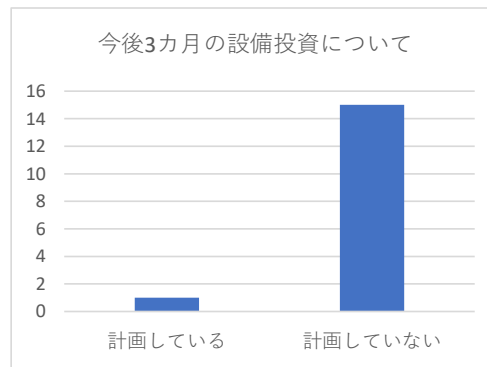
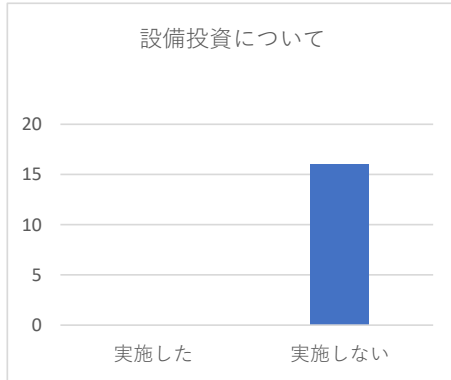
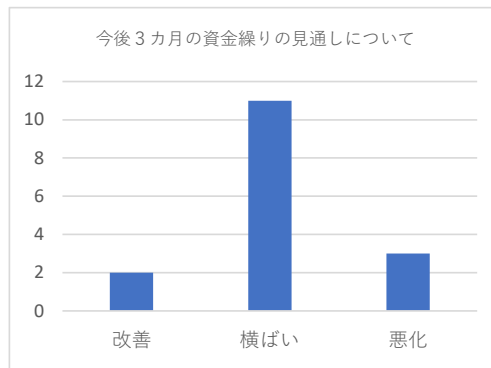
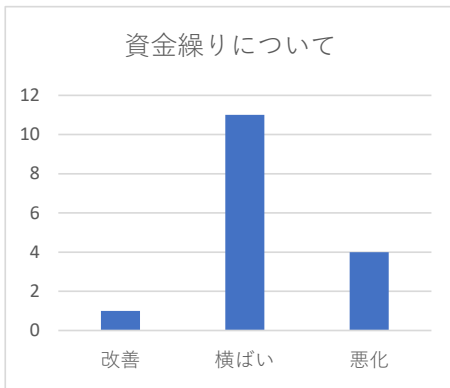
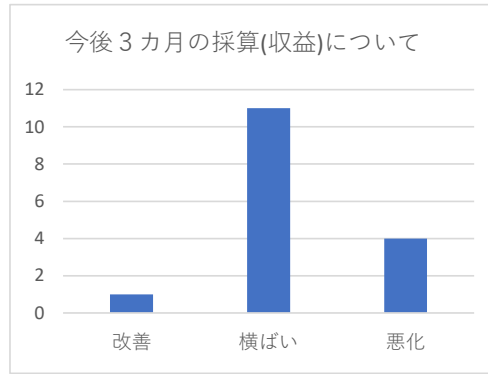
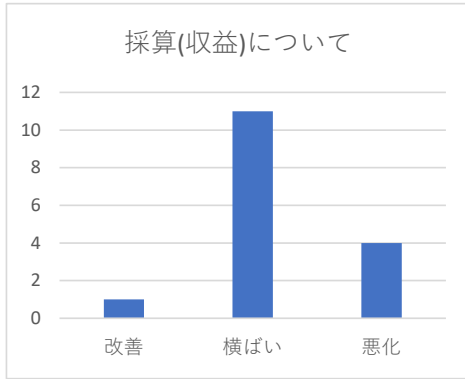
実施時期 令和6年7月1日～19日

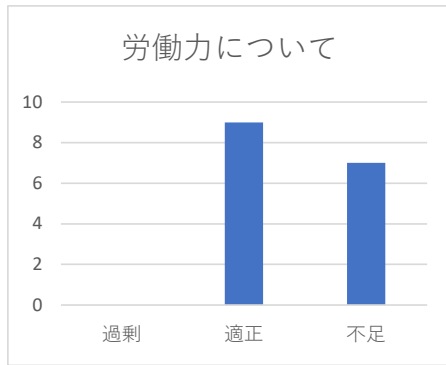
調査方法 職員によるヒアリング調査

回答数 16者



(建設業)





経営課題

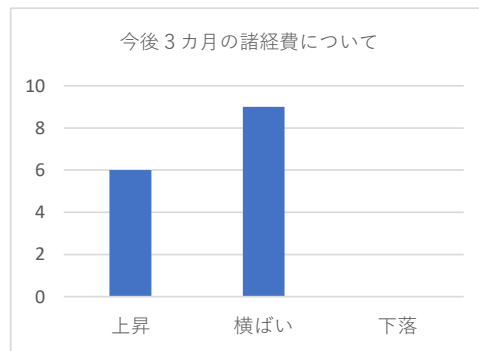
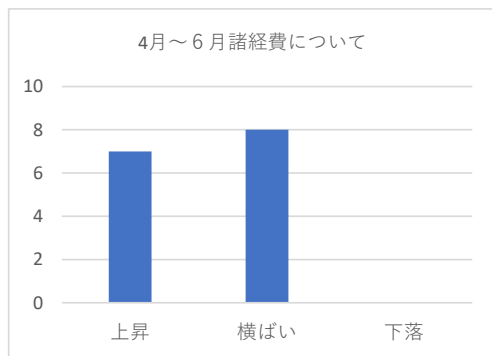
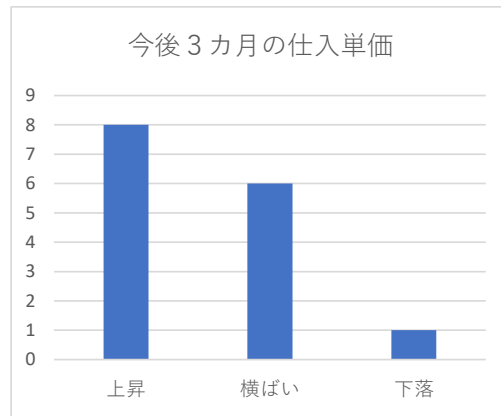
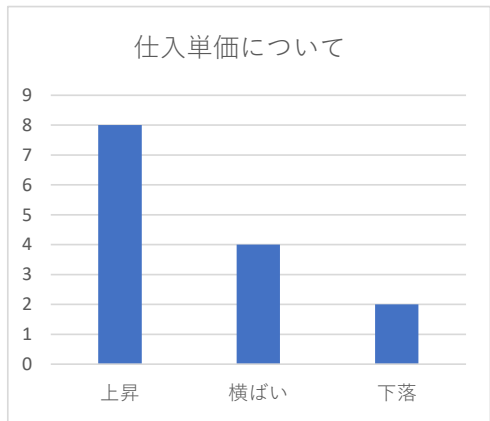
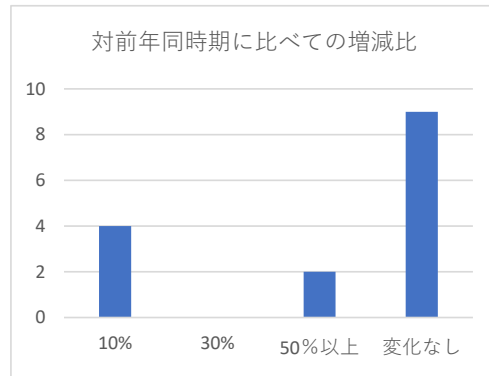
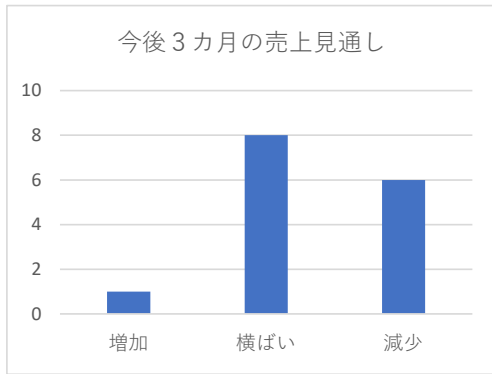
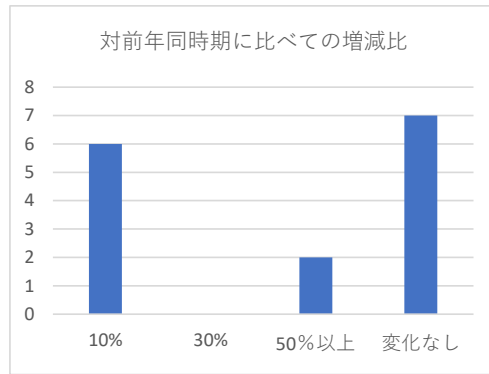
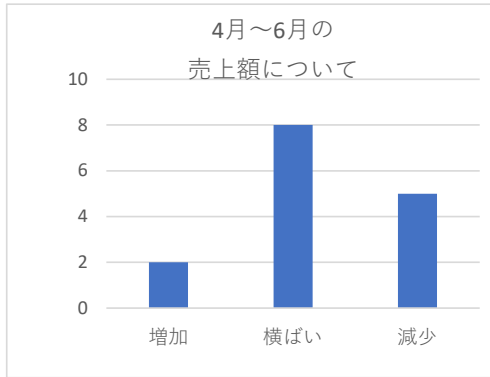
1.需要の低迷	5
2.販売価格の低下	2
3.原材料の高騰	6
4.人件費の増加	1
5.取引条件の悪化	1
6.同業者との競争激化	4
7.人材確保難	5
8.経営者の高齢化	3
9.後継者難	3

令和6年度 景気動向調査結果（卸・小売業）

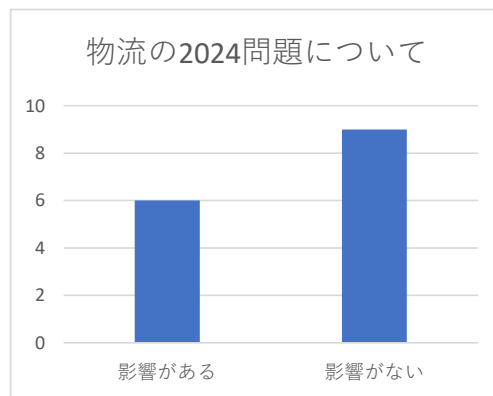
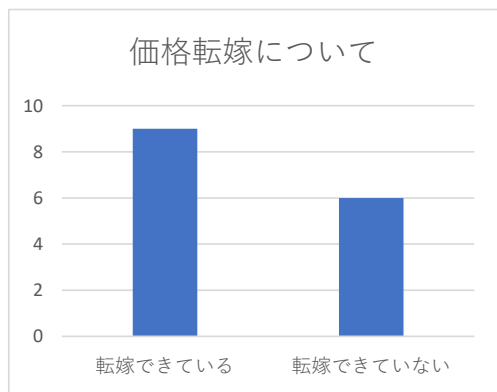
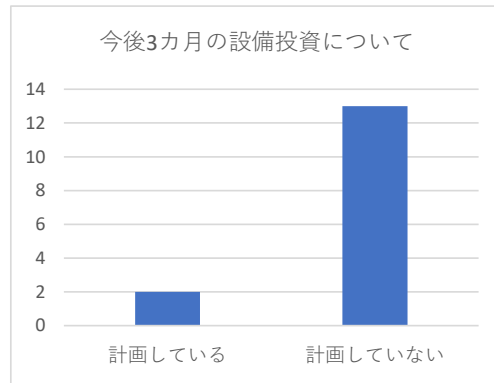
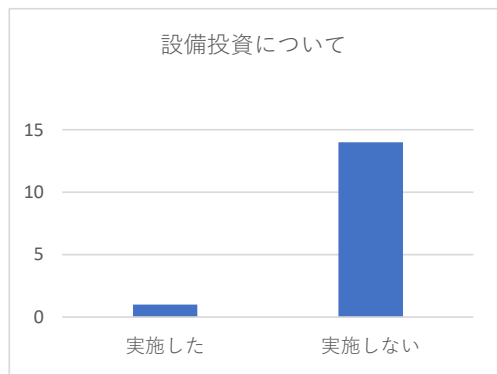
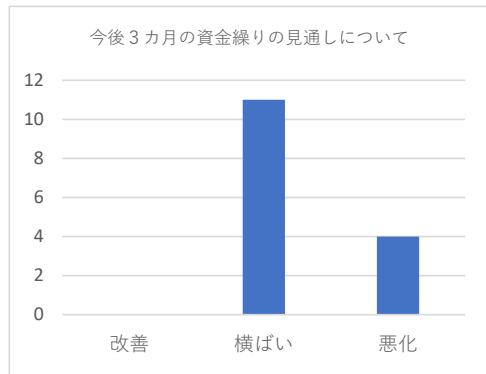
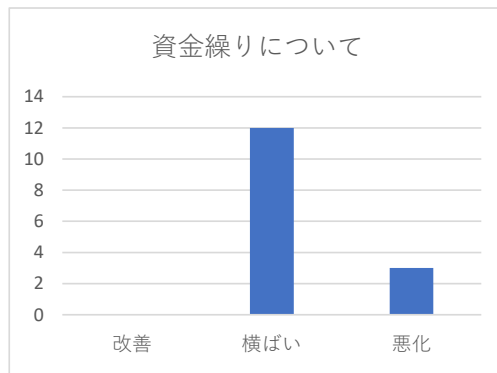
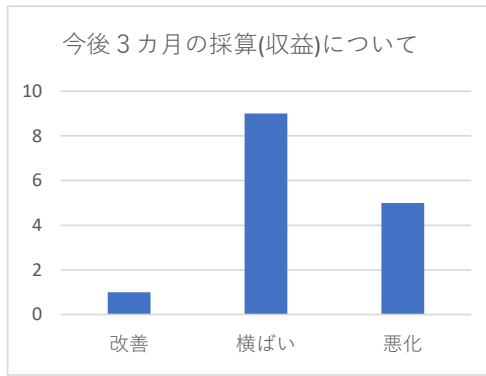
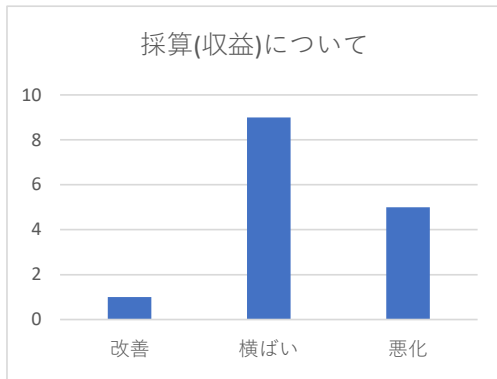
実施時期 令和6年7月1日～19日

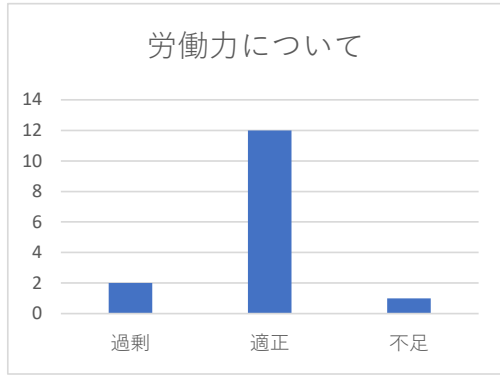
調査方法 職員によるヒアリング調査

回答数 15者



(卸・小売業)





経営課題

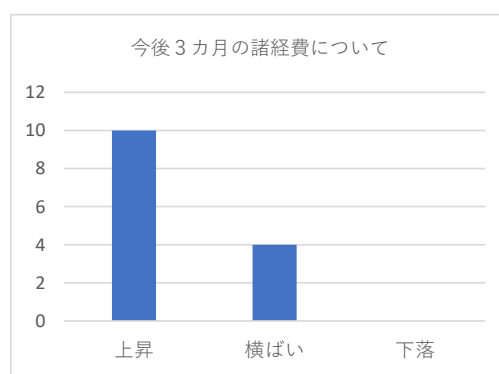
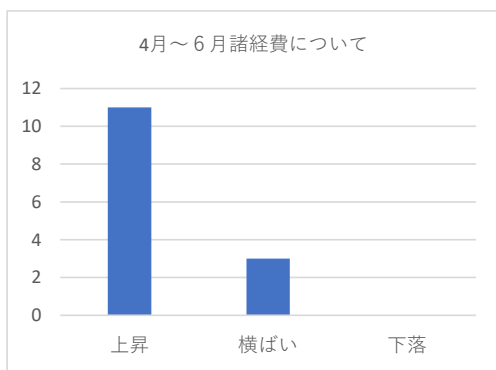
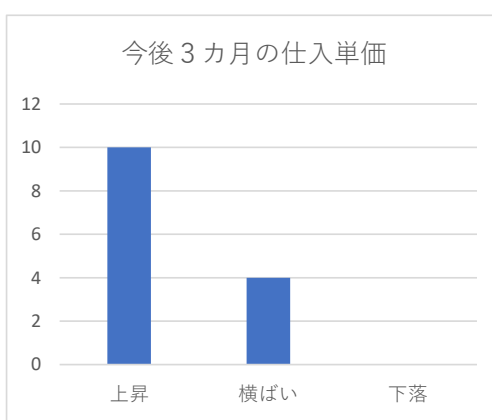
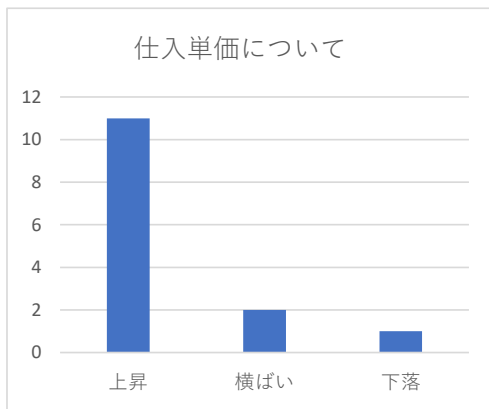
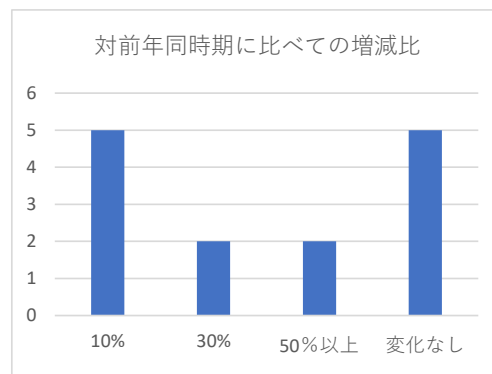
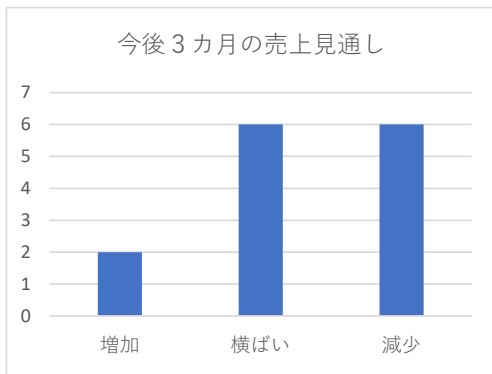
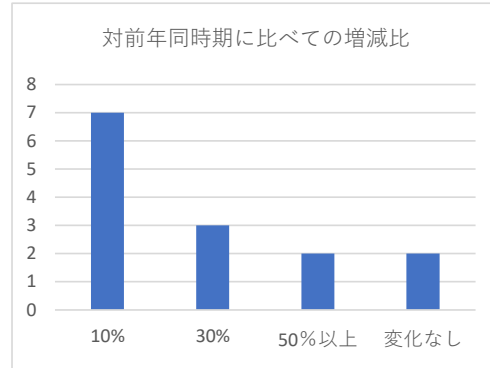
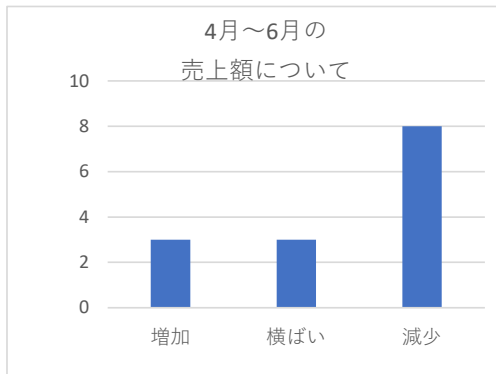
1.需要の低迷	4
2.販売価格の低下	1
3.原材料の高騰	5
4.人件費の増加	0
5.取引条件の悪化	1
6.同業者との競争激化	3
7.人材確保難	1
8.経営者の高齢化	3
9.後継者難	2

令和6年度 景気動向調査結果（製造業）

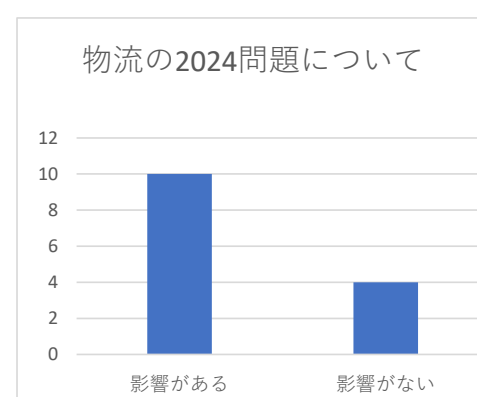
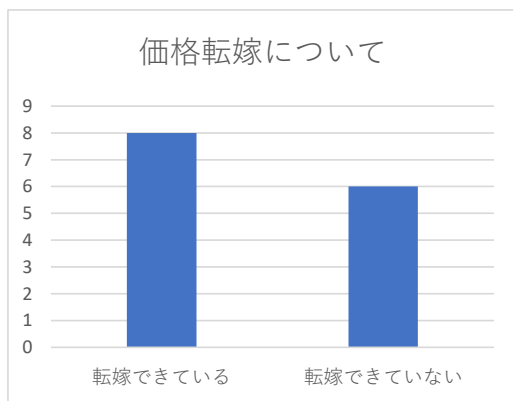
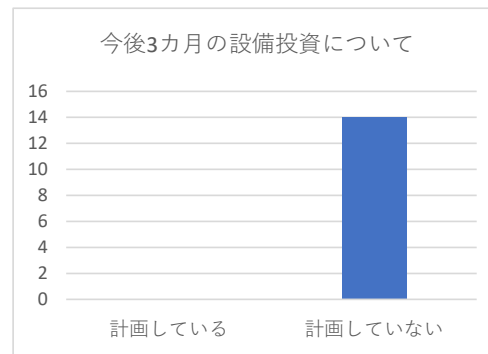
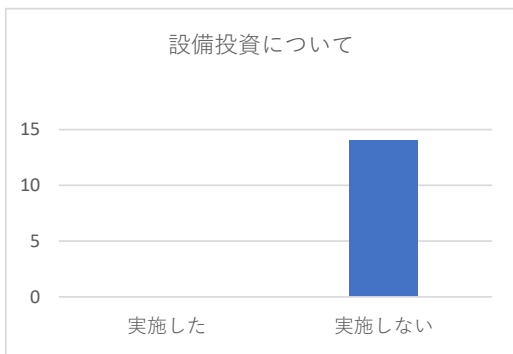
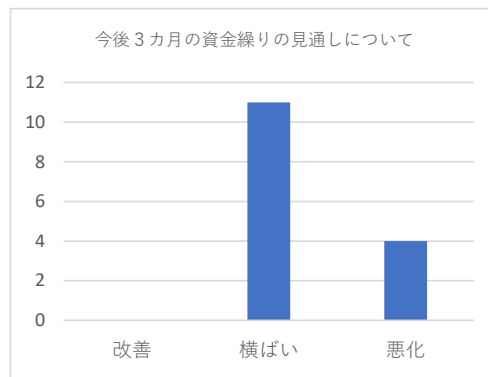
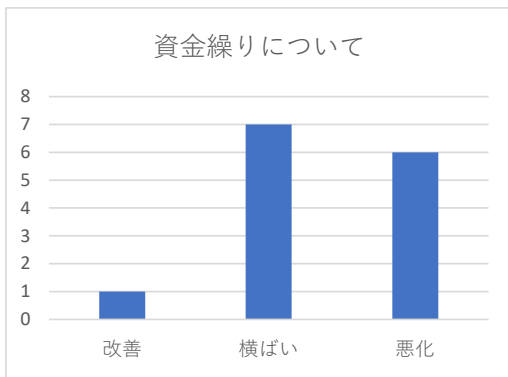
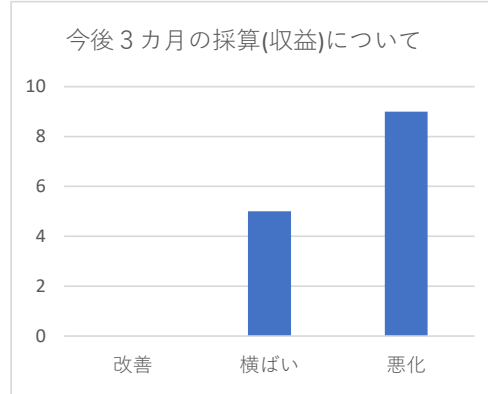
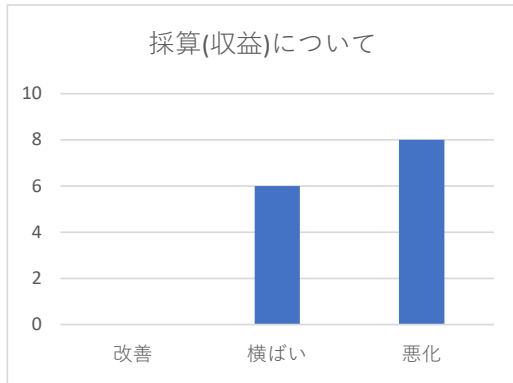
実施時期 令和6年7月1日～19日

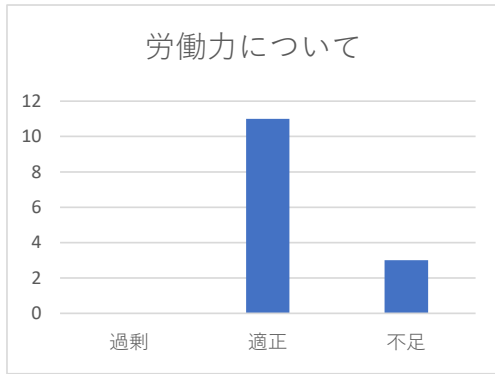
調査方法 職員によるヒアリング調査

回答数 14者



(製造業)





経営課題

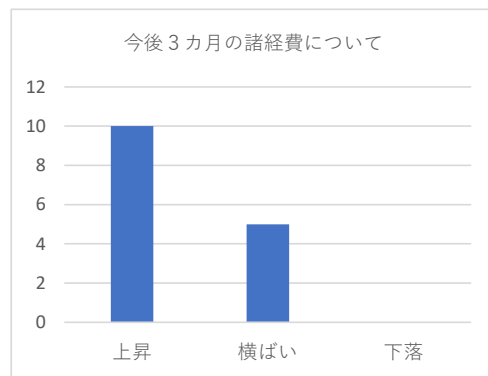
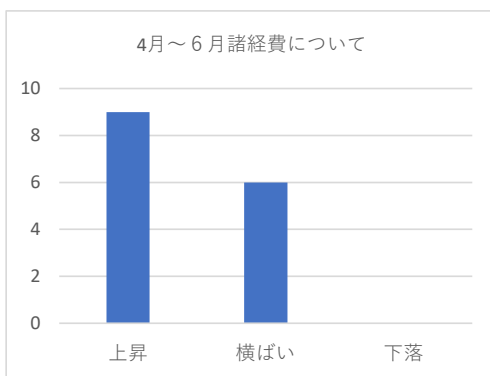
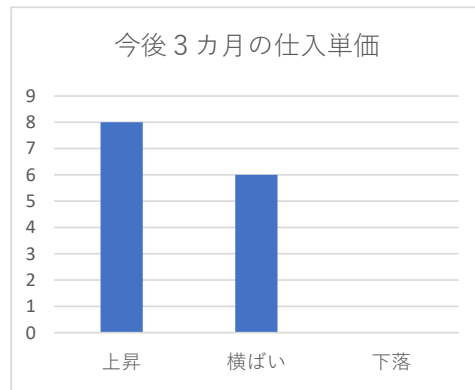
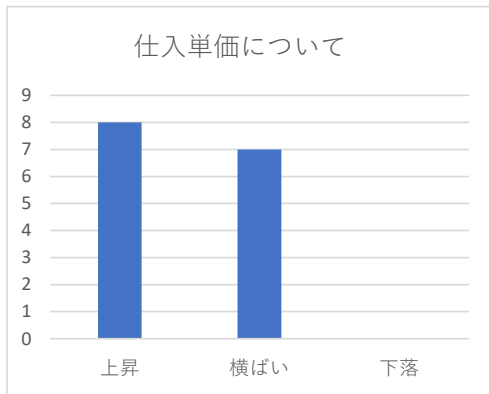
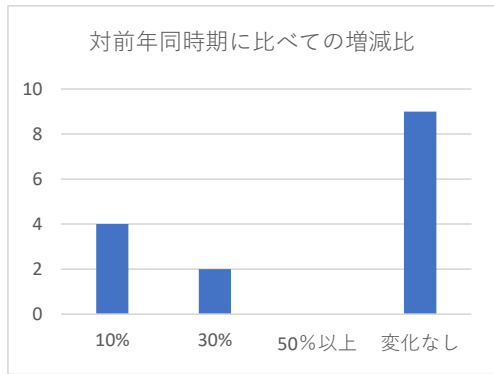
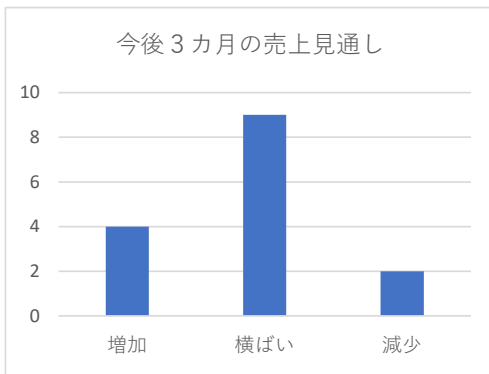
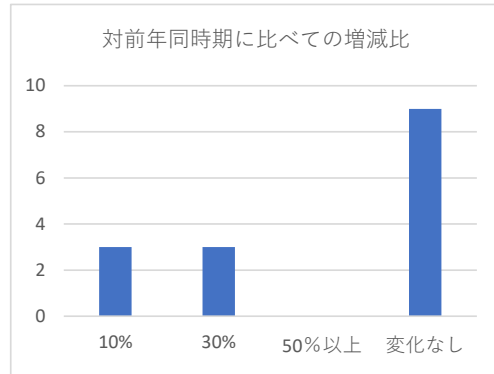
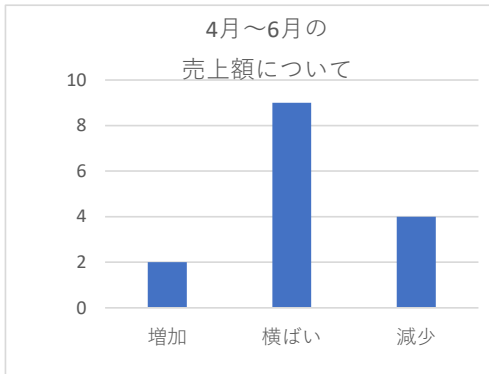
1.需要の低迷	7
2.販売価格の低下	1
3.原材料の高騰	10
4.人件費の増加	1
5.取引条件の悪化	0
6.同業者との競争激化	1
7.人材確保難	0
8.経営者の高齢化	2
9.後継者難	2

令和6年度 景気動向調査結果（サービス）

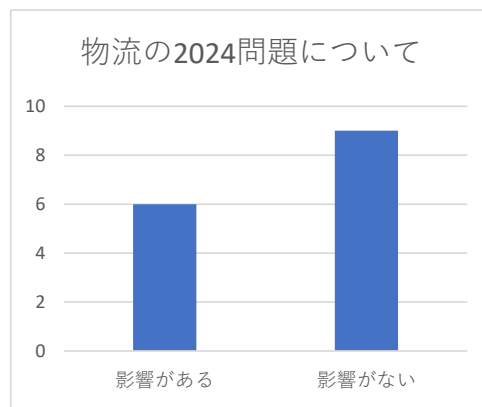
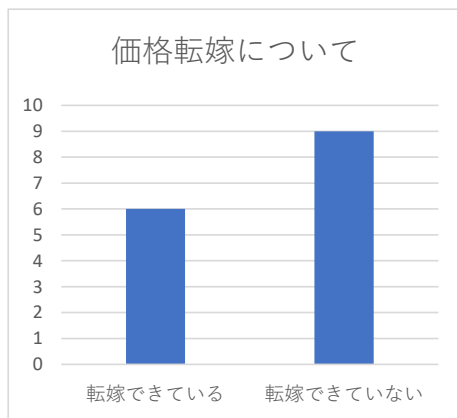
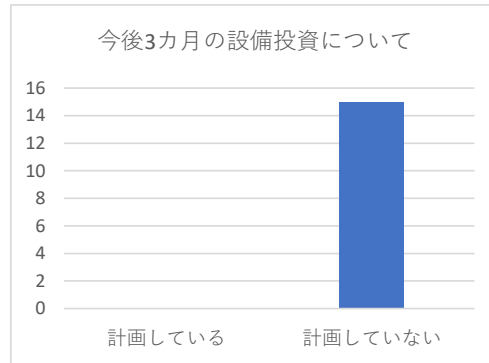
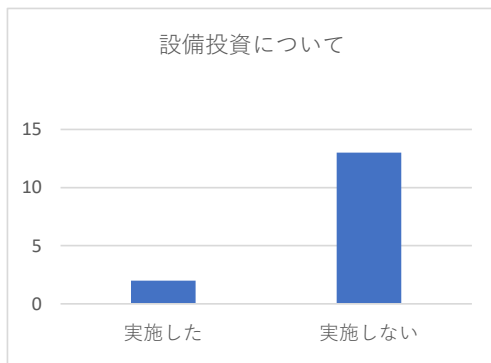
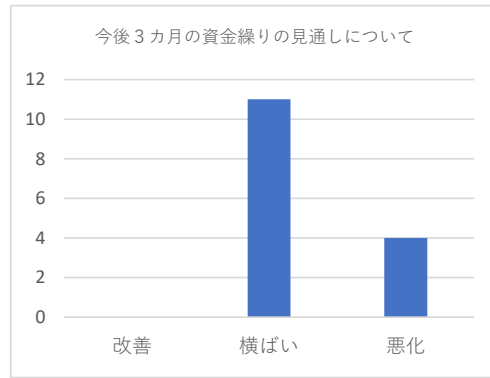
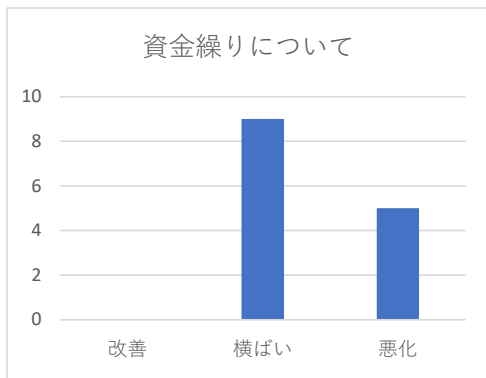
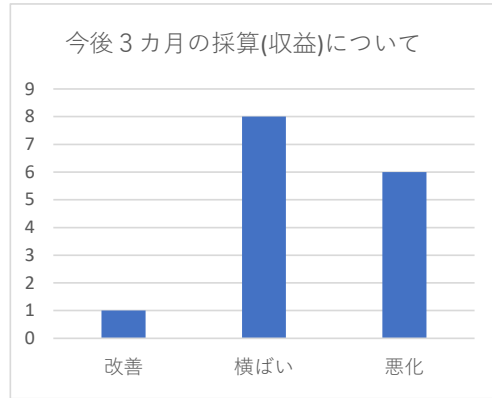
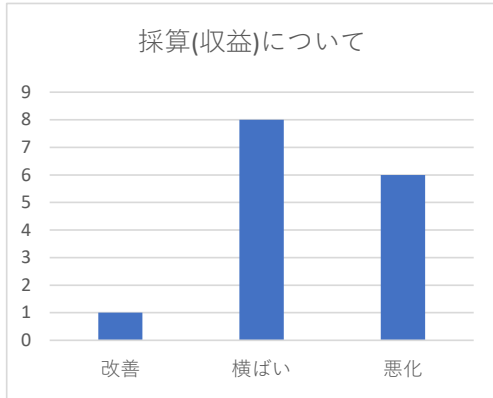
実施時期 令和6年7月 1日～ 19日

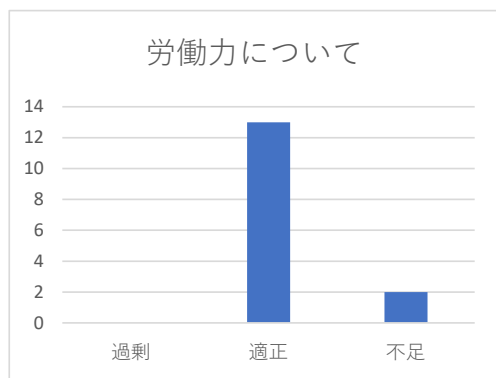
調査方法 職員によるヒアリング調査

回答数 15者



(サービス業)





経営課題

1.需要の低迷	4
2.販売価格の低下	1
3.原材料の高騰	8
4.人件費の増加	0
5.取引条件の悪化	0
6.同業者との競争激化	3
7.人材確保難	1
8.経営者の高齢化	3
9.後継者難	2