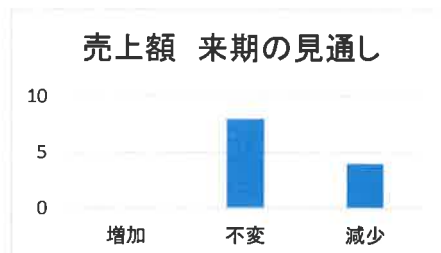
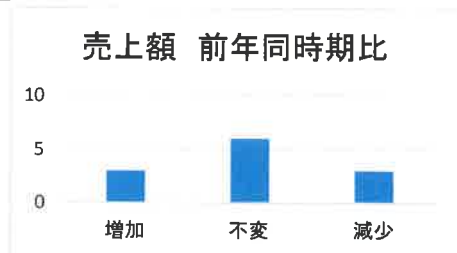
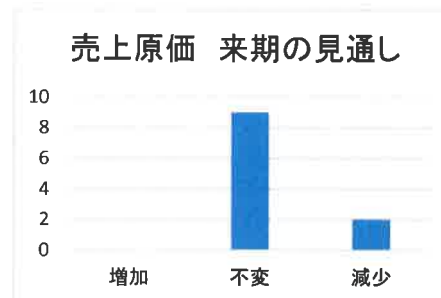
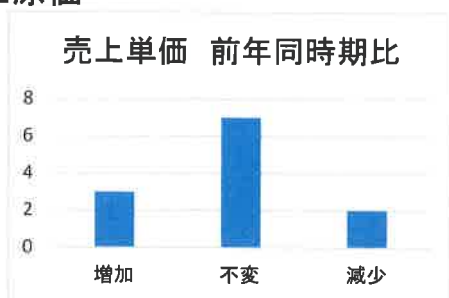


建設業

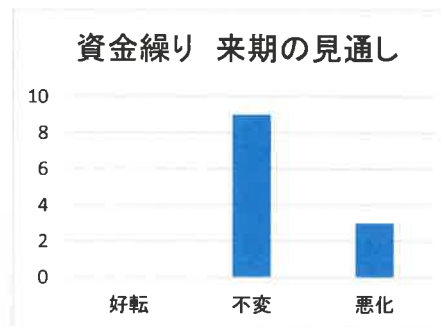
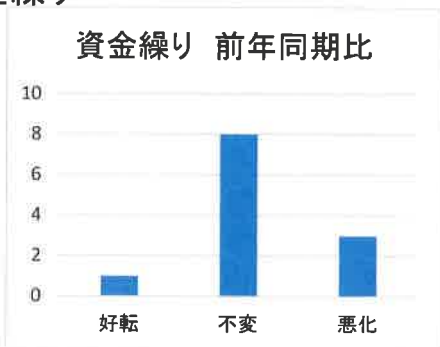
①売上



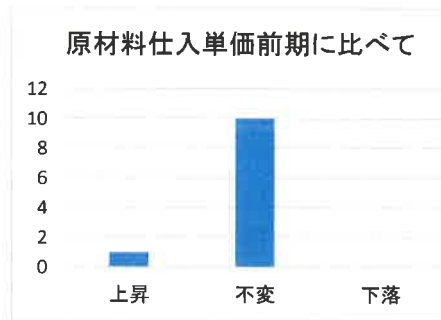
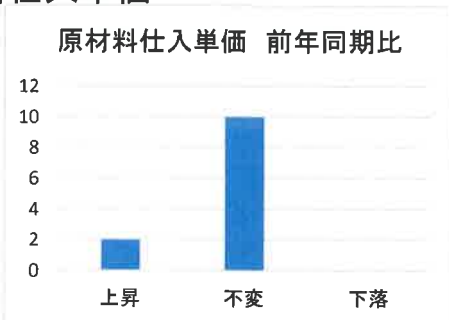
②売上原価



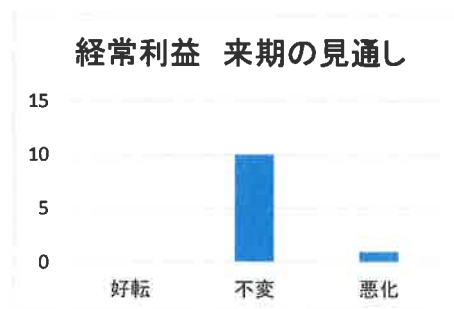
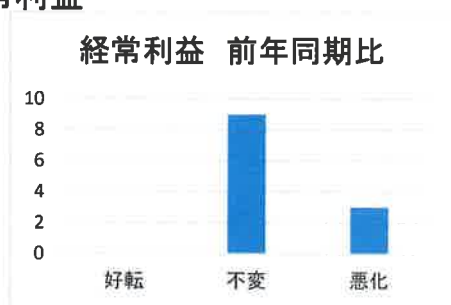
③資金繰り



④材料仕入単価



⑤ 経常利益

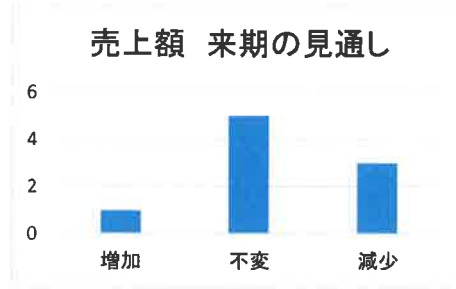
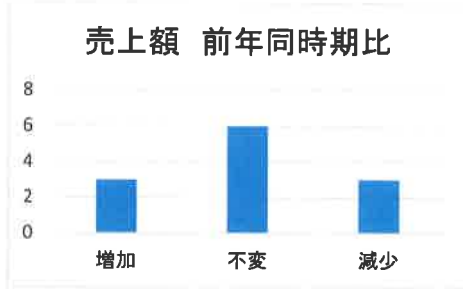


経営上の課題

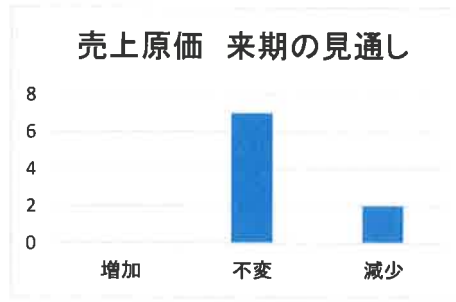
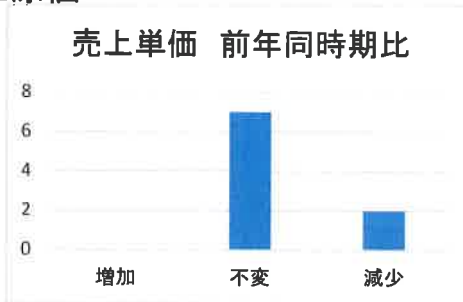
- ・材料価格の上昇
- ・下請業者の確保難
- ・官公・民間需要の停滞

製造業

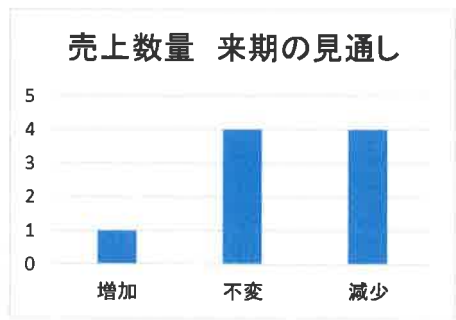
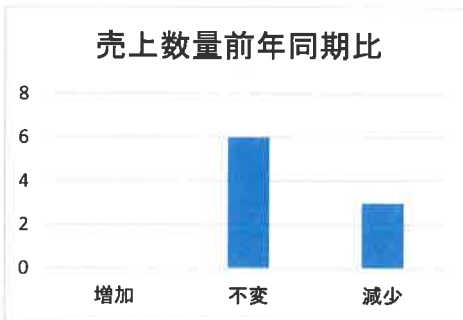
①売上



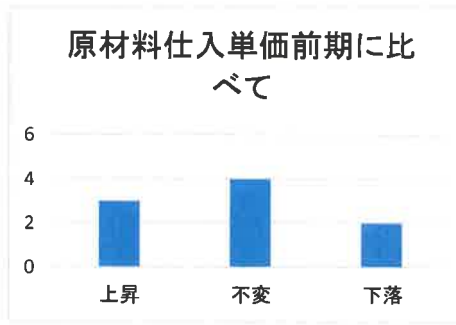
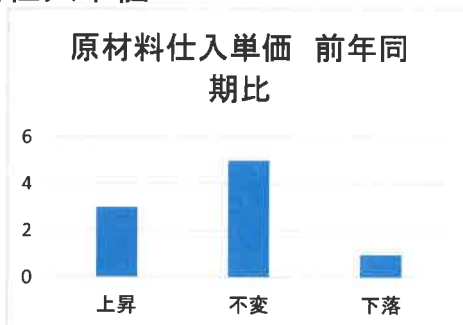
②売上原価



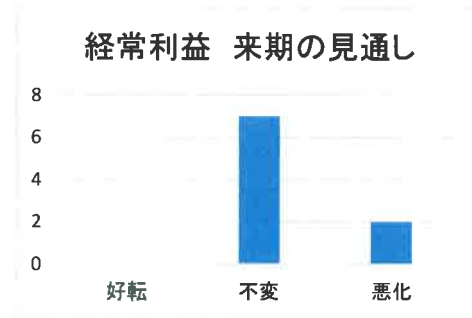
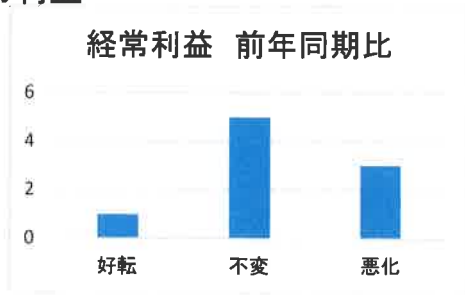
③売上数量



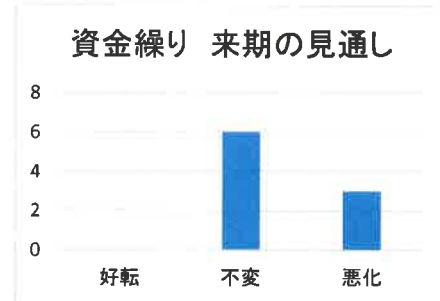
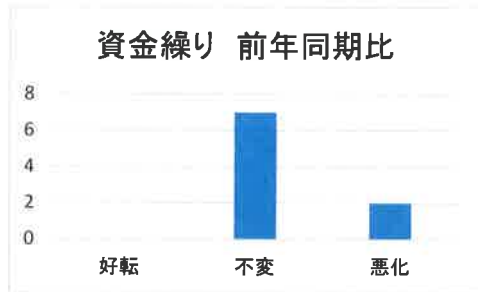
④材料仕入単価



⑤ 経常利益



⑥ 資金繰り

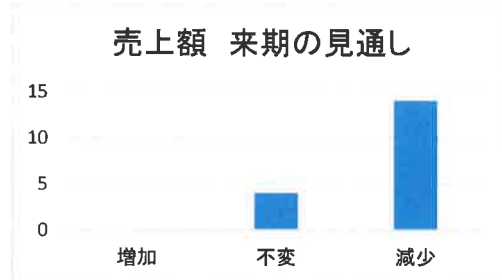
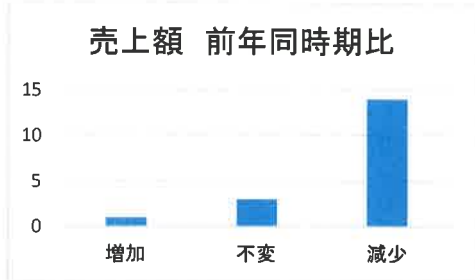


経営上の課題

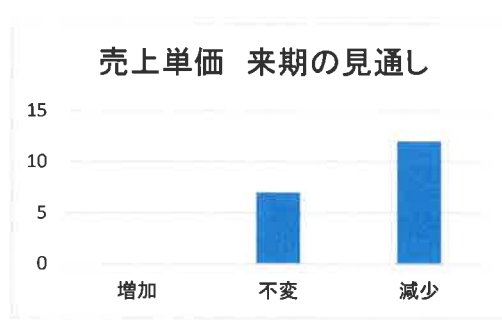
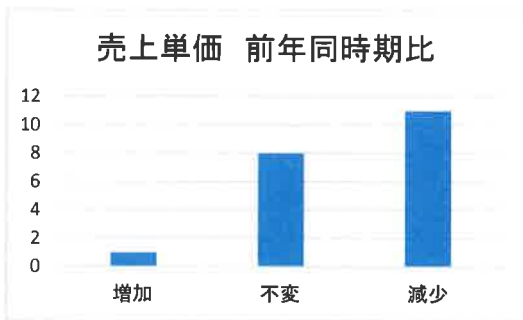
- ・生産設備の老朽化
- ・材料価格の上昇
- ・事業資金の借入難
- ・需要の停滞

卸売・小売業

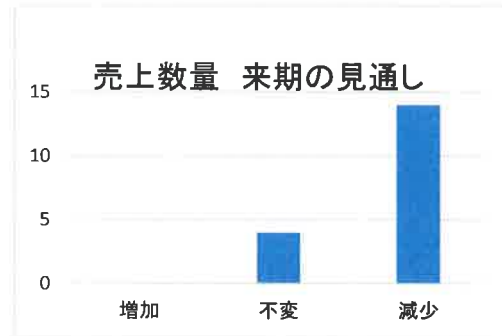
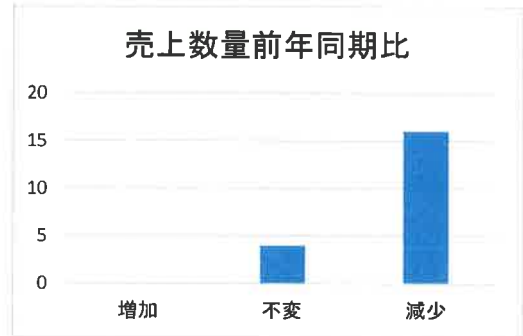
①売上



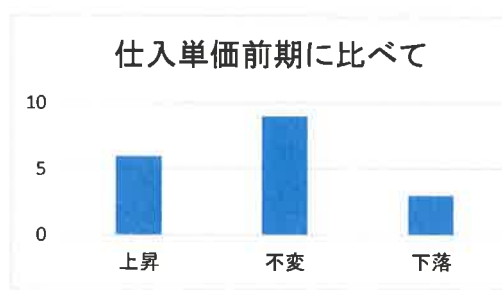
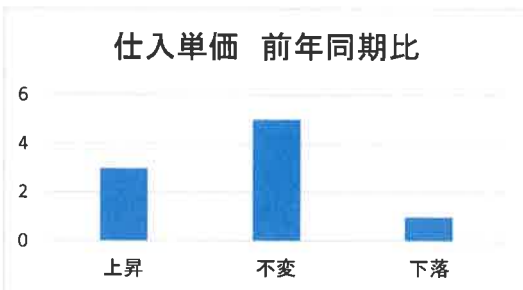
②売上単価



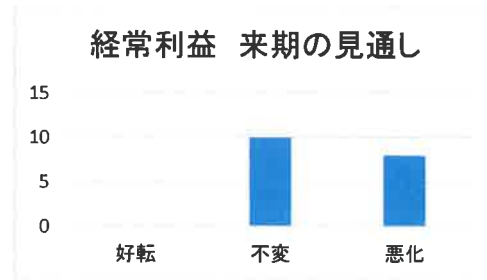
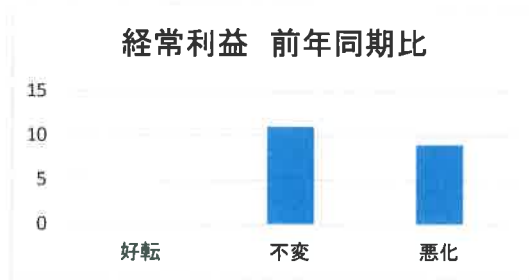
③売上数量



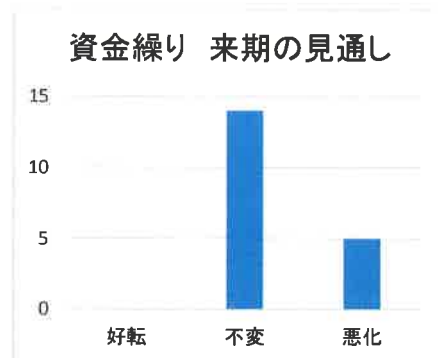
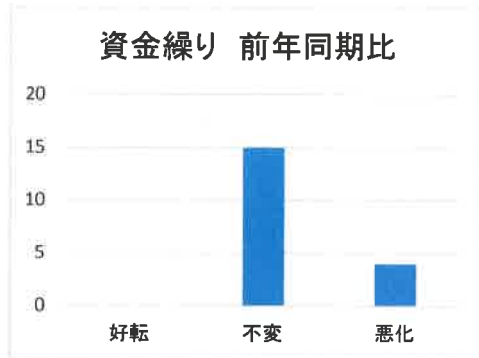
④仕入単価



⑤ 経常利益



⑥ 資金繰り

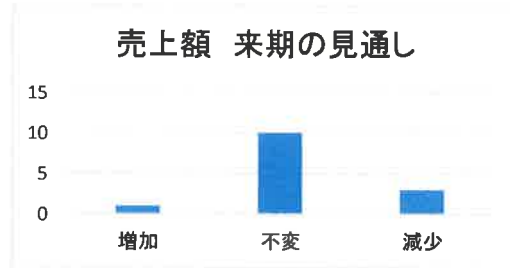
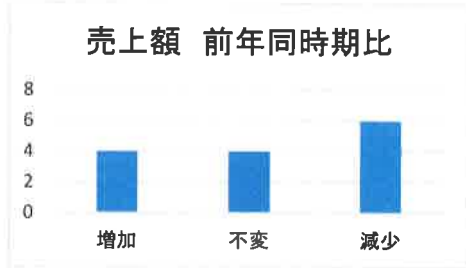


経営上の課題

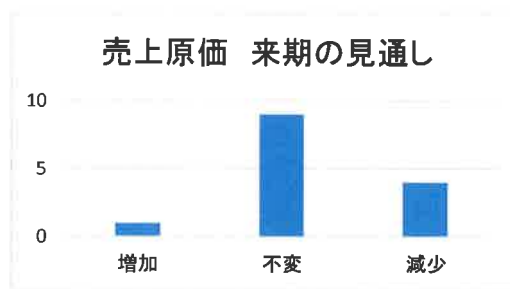
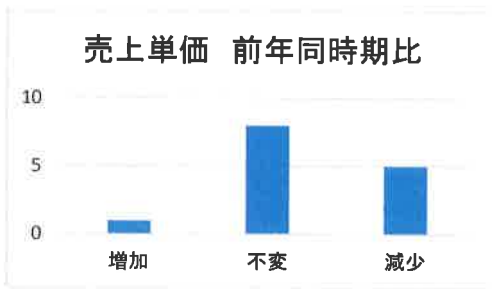
- ・大型店・中型店の進出による競争の激化
- ・購買力の他地域への流出
- ・仕入単価の上昇

サービス業

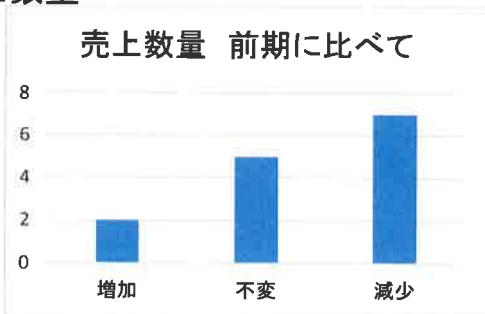
①売上



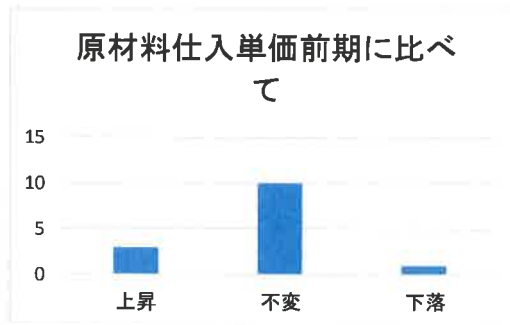
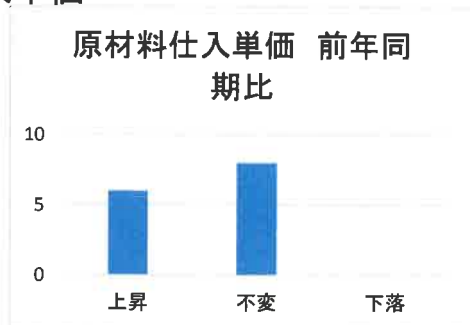
②売上単価



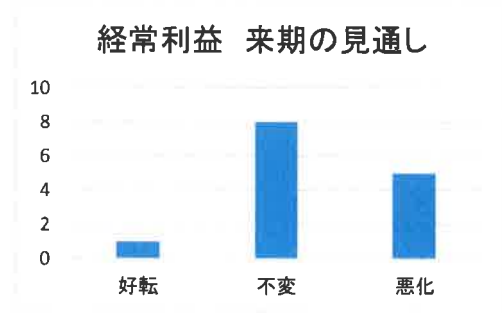
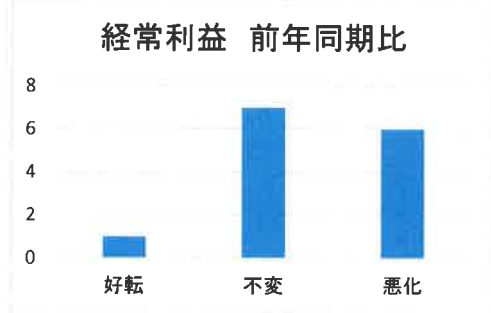
③売上数量



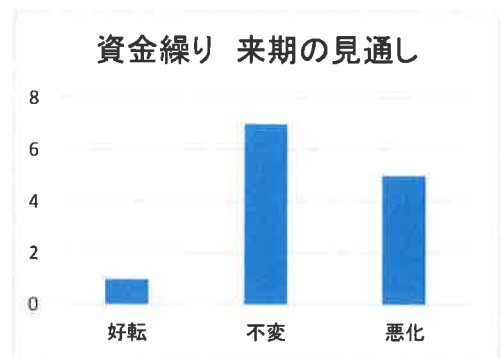
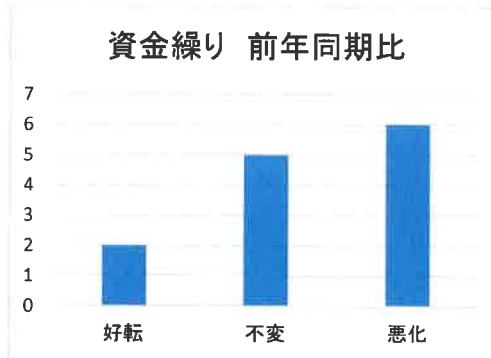
④仕入単価



⑤ 経常利益



⑥ 資金繰り



経営上の課題

- ・新規参入業者の増加
- ・利用者ニーズの変化への
- ・利用料金の低下・上昇難
- ・需要の停滞