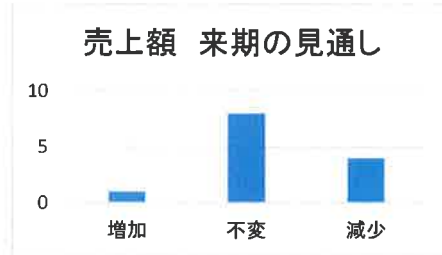
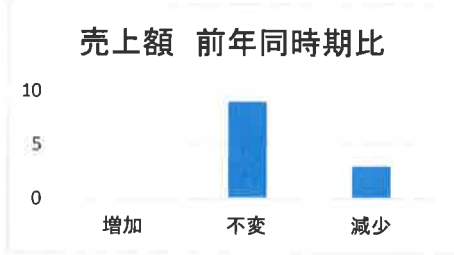
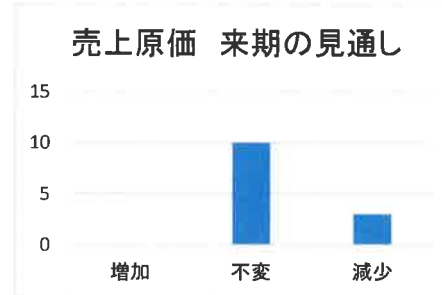
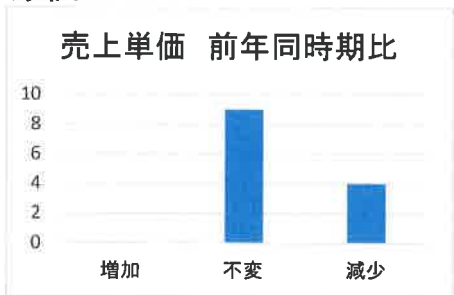


## 建設業

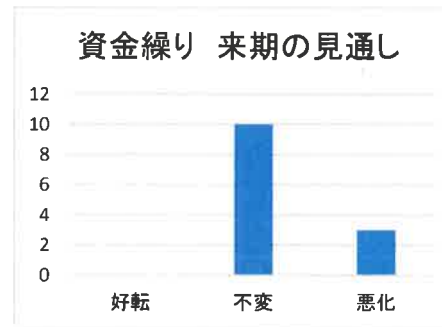
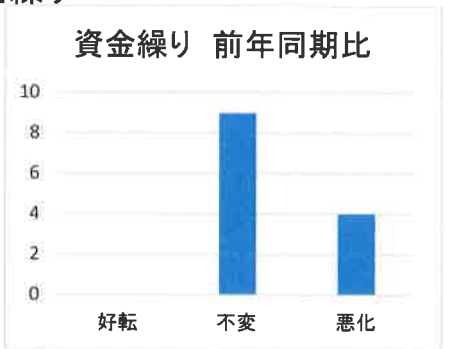
### ①売上



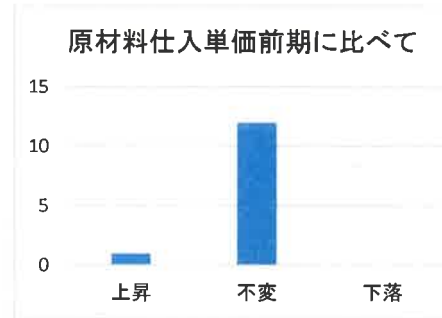
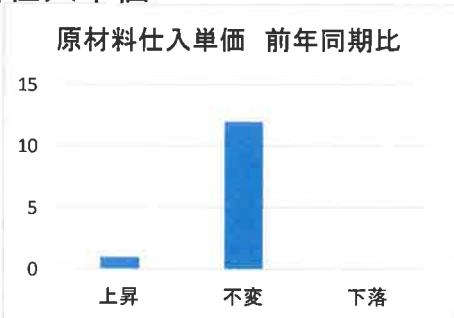
### ②売上原価



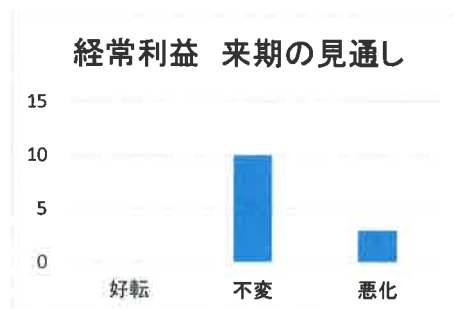
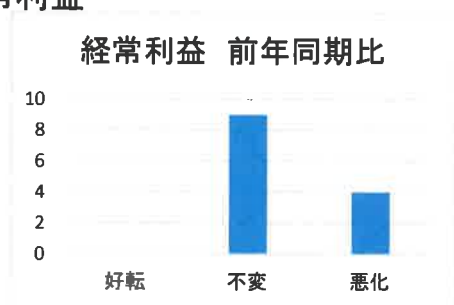
### ③資金繰り



### ④材料仕入単価



## ⑤ 経常利益

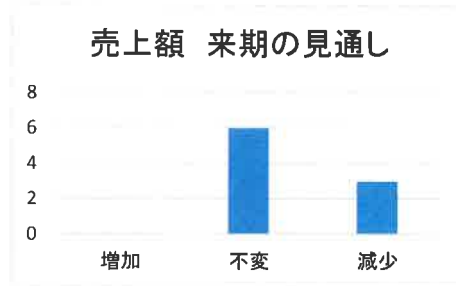
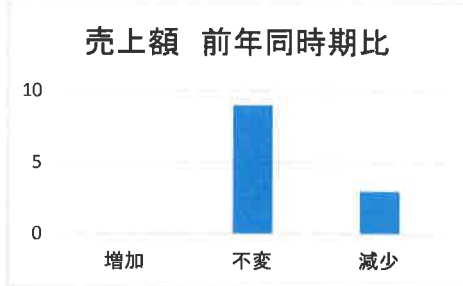


### 経営上の課題

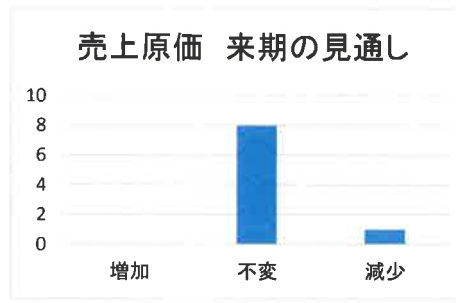
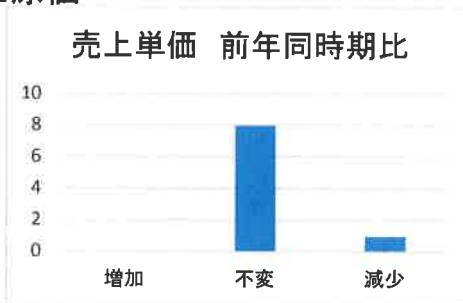
- ・材料費・人件費以外の経費の増加
- ・従業員の確保難
- ・官公需要の停滞
- ・民間需要の停滞

## 製造業

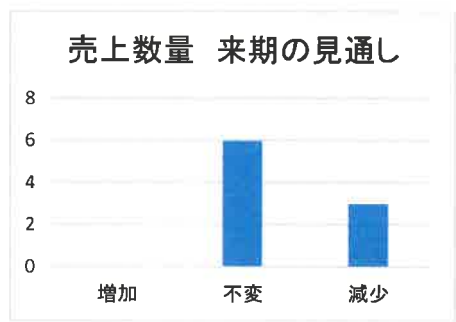
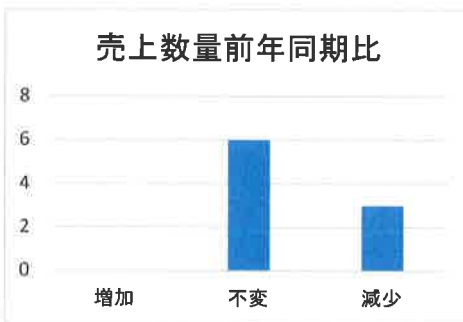
### ①売上



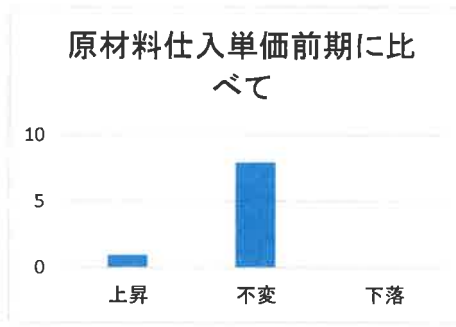
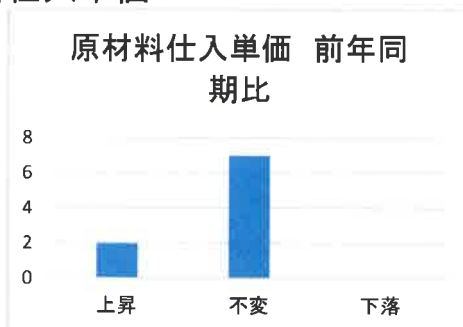
### ②売上原価



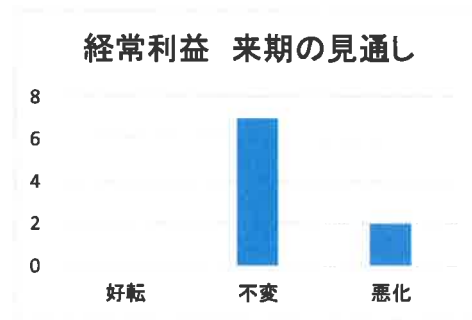
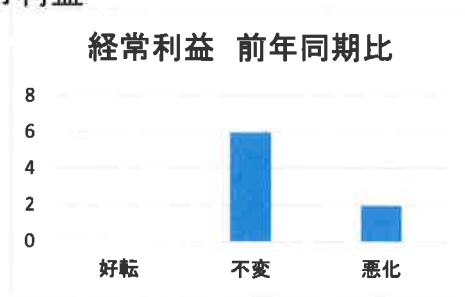
### ③売上数量



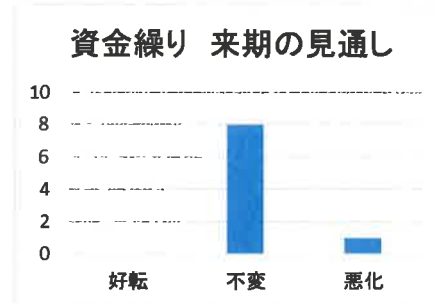
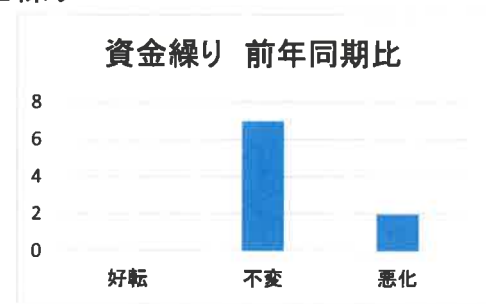
### ④材料仕入単価



## ⑤ 経常利益



## ⑥ 資金繰り

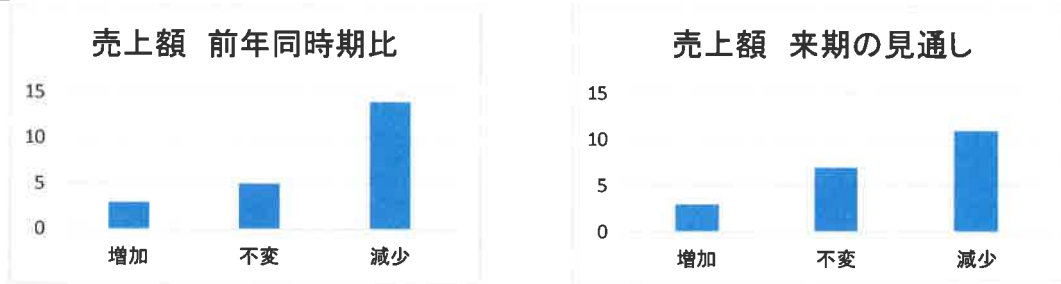


### 経営上の課題

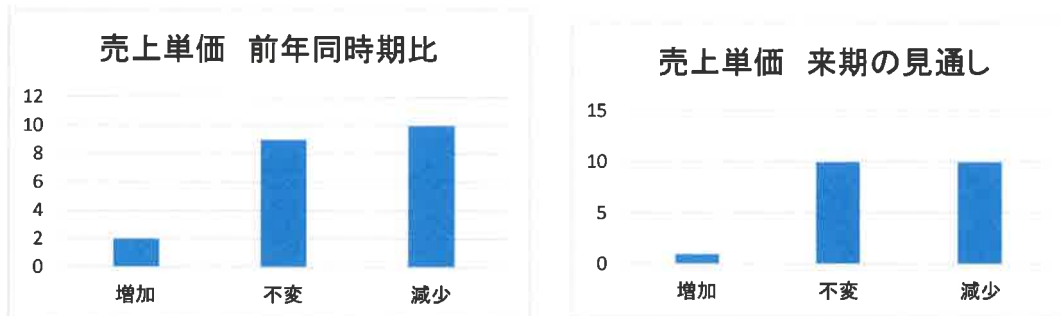
- ・材料の入手難
- ・材料費・人件費以外の経費の増加

## 卸売・小売業

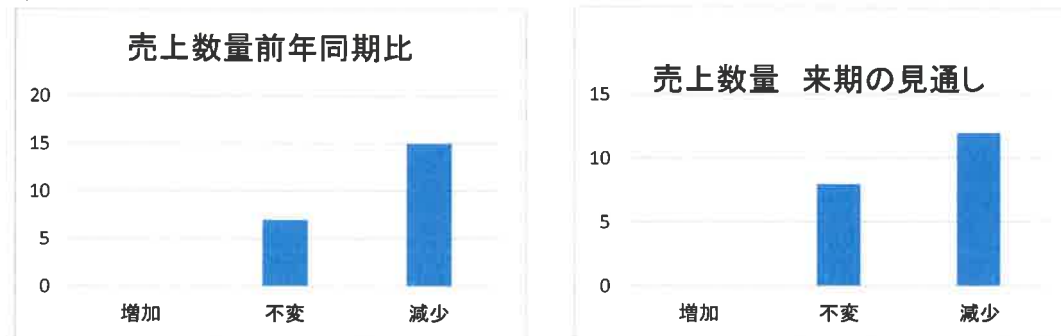
### ①売上



### ②売上単価



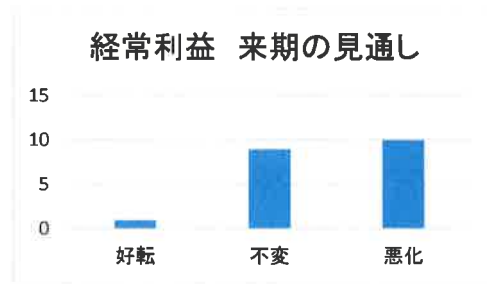
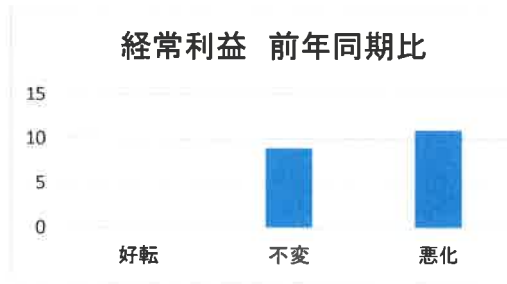
### ③売上数量



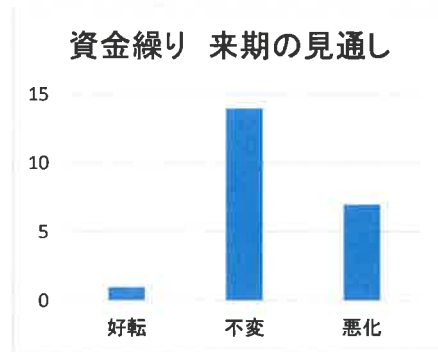
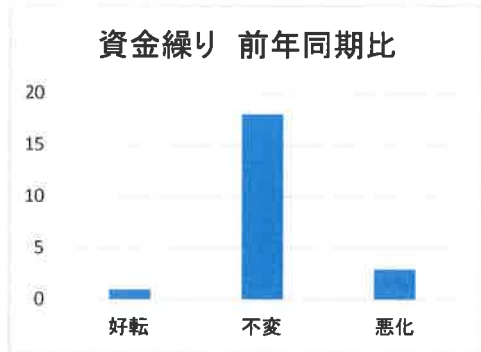
### ④仕入単価



## ⑤ 経常利益



## ⑥ 資金繰り

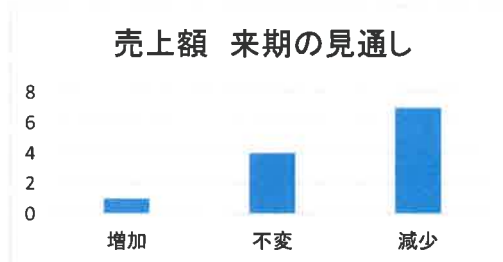
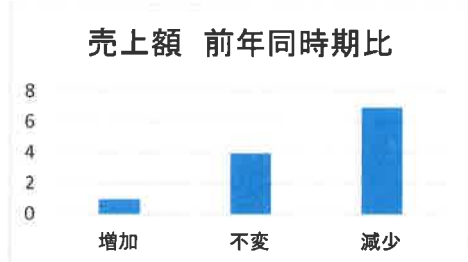


### 経営上の課題

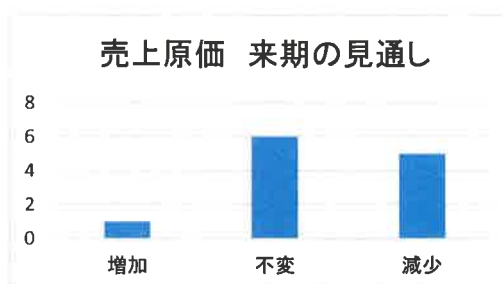
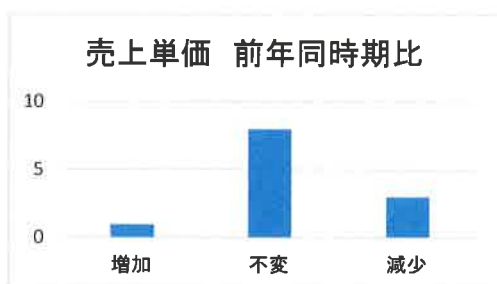
- ・大型員・中型店進出による競争の激化
- ・購買力の他地域への流出
- ・商品在庫の過剰

## サービス業

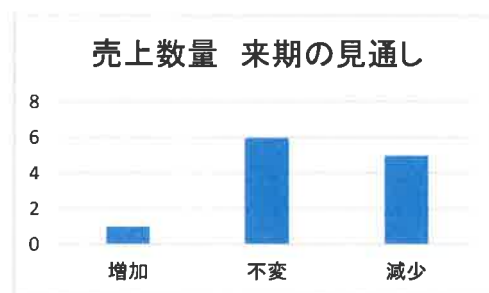
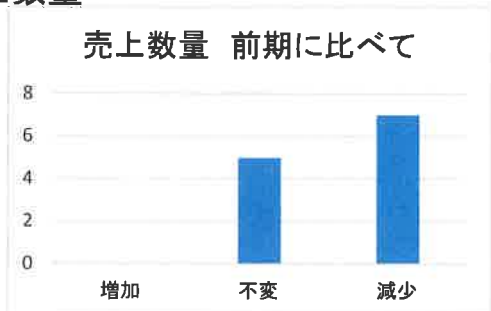
### ①売上



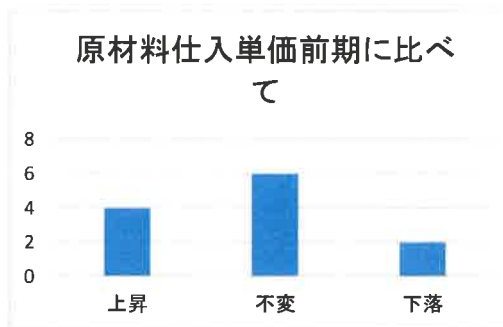
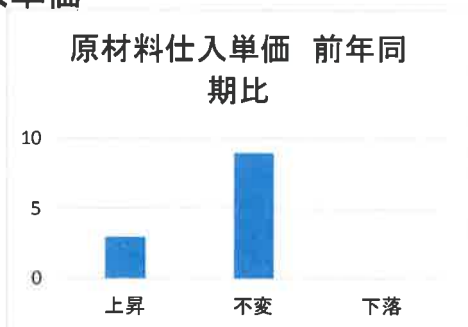
### ②売上単価



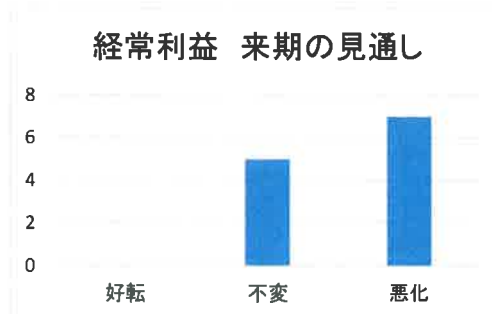
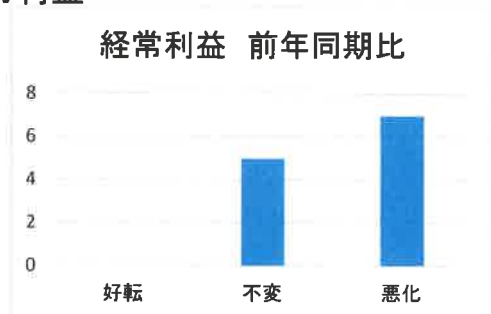
### ③売上数量



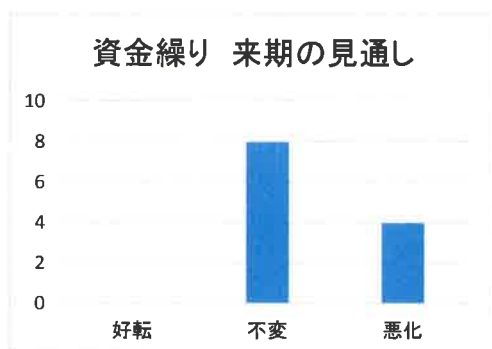
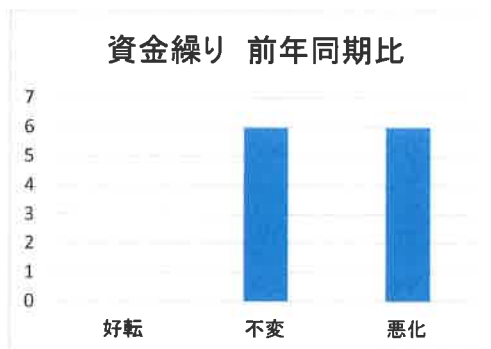
### ④仕入単価



## ⑤ 経常利益



## ⑥ 資金繰り



### 経営上の課題

- ・店舗施設の狭隘・老朽化
- ・材料費・人件費以外の経費の増加