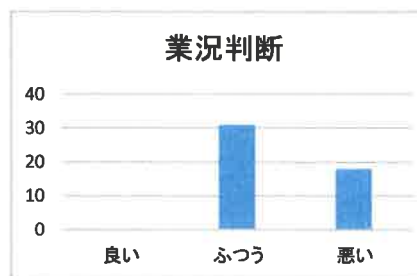
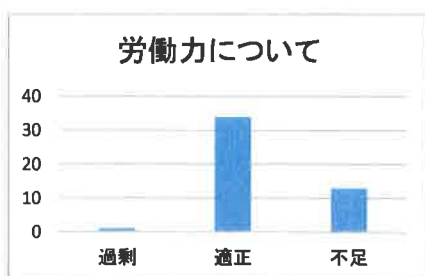
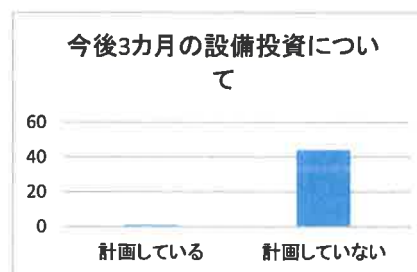
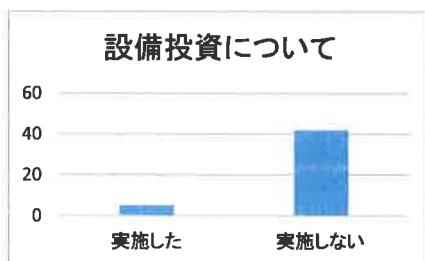
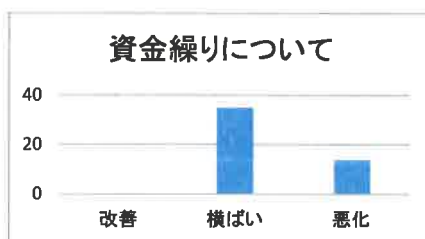
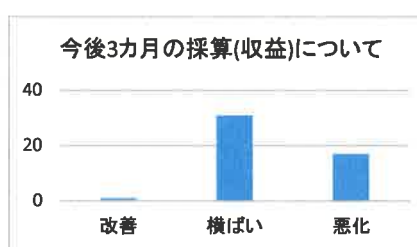
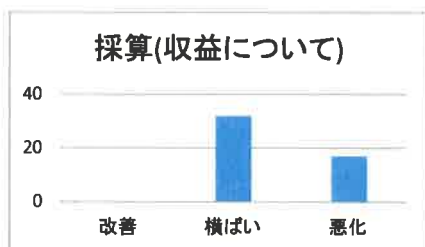
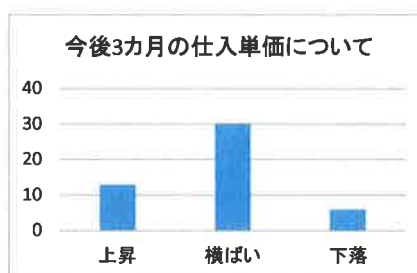
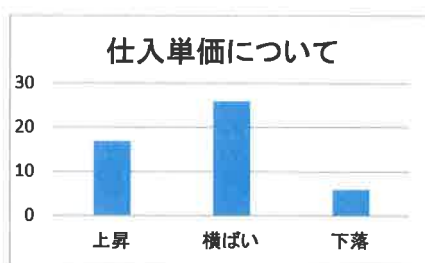
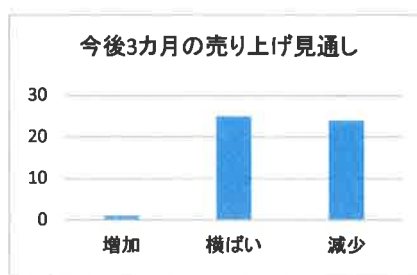
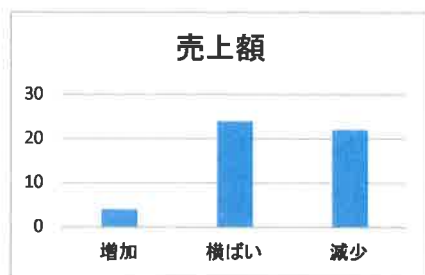
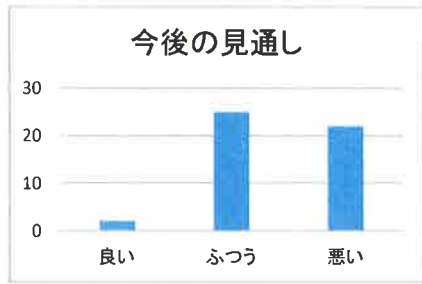


平成31年度第4回景気動向に関する定点観測(全体)
 期間 令和2年3月1日～3月10日
 事業所数 50者(製造業、建設業、卸・小売業、サービス業)
 実施方法 職員7名によるヒアリング方式

①全体



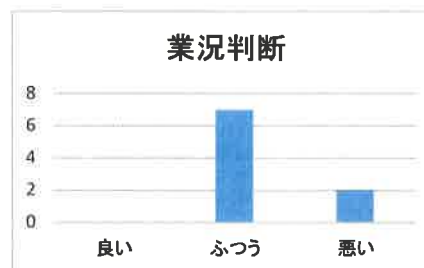
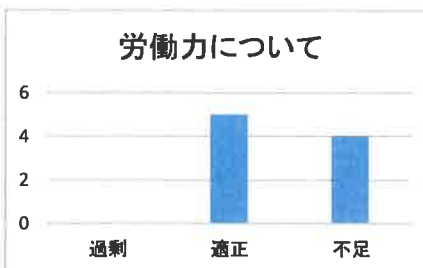
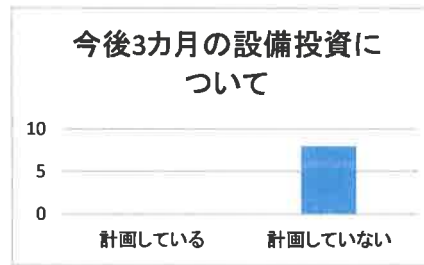
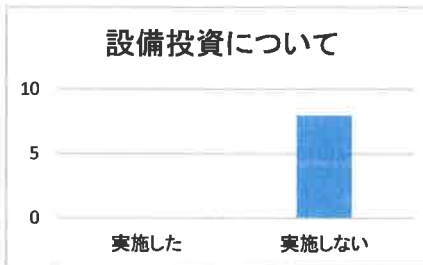
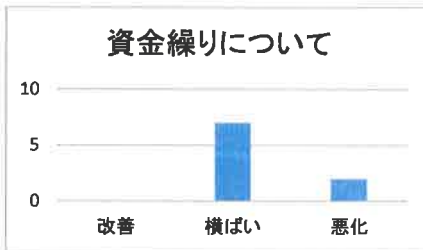
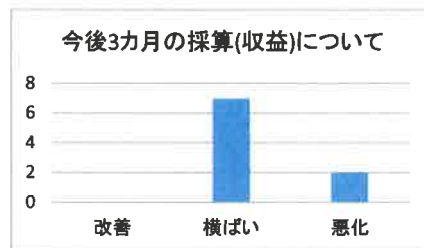
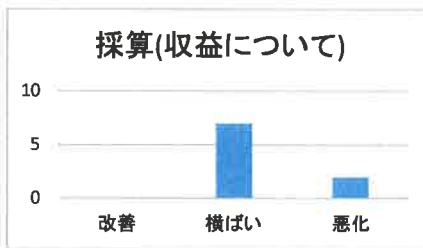
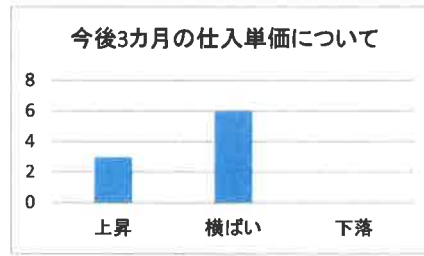
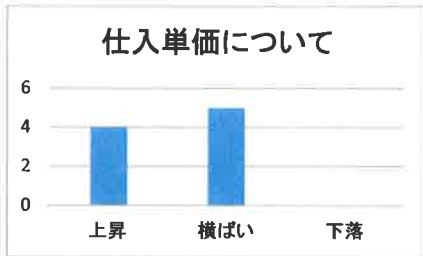
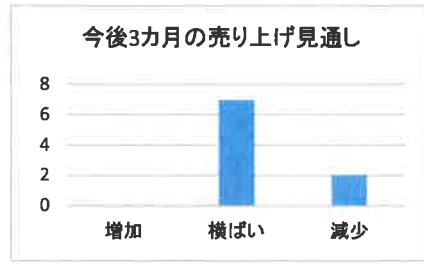
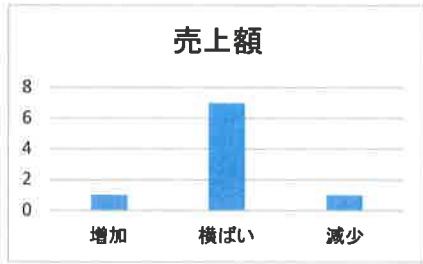


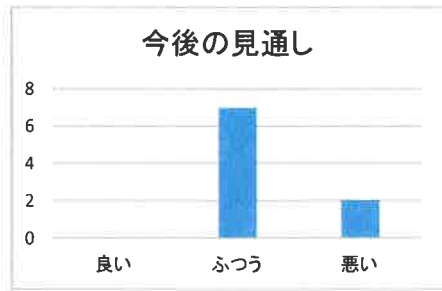
経営課題

需要の低迷	18
経営者の高齢化	9
同業者との競争激化	8
人材確保難	7
原材料の高騰	5
後継者難	3
人件費の増加	1
販売価格の低下	1

平成31年度第4回景気動向に関する定点観測
 期間 令和2年3月1日～3月10日

②建設業



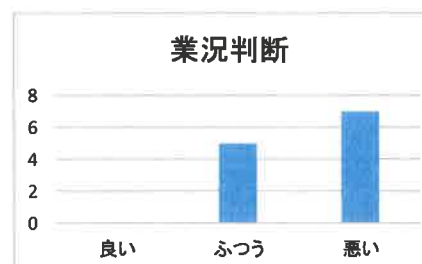
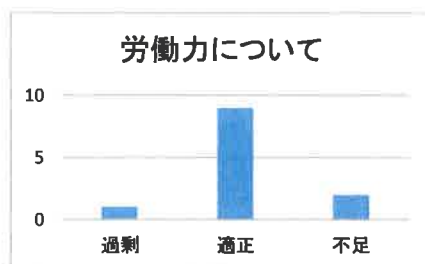
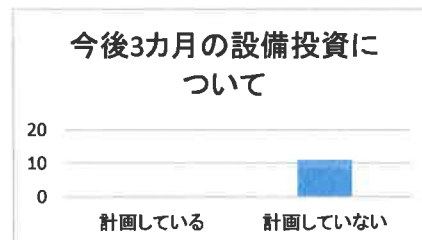
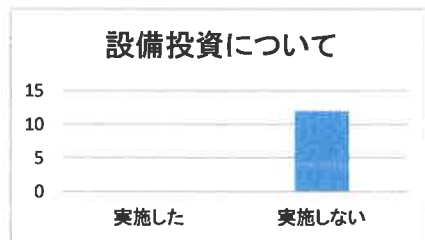
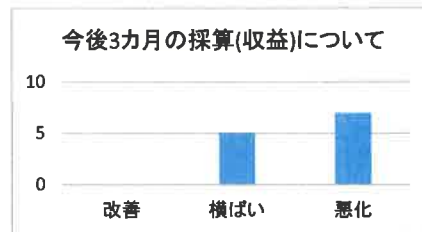
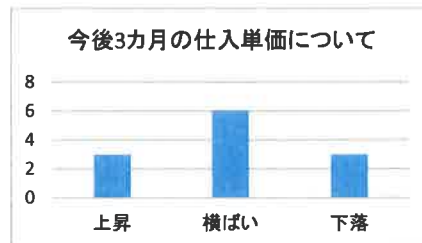
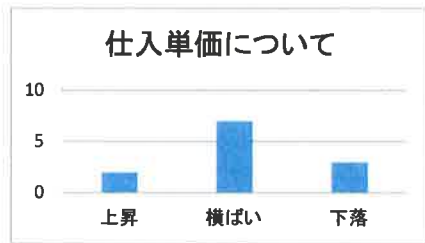
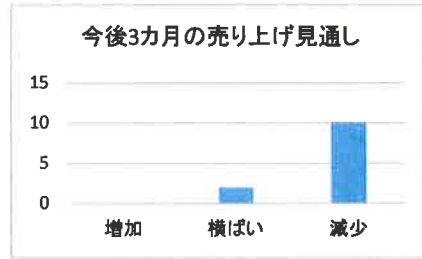
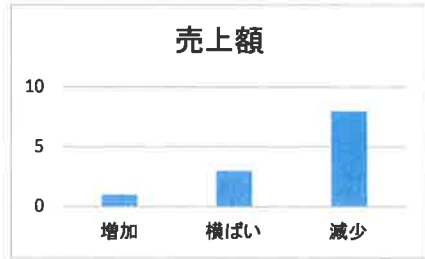


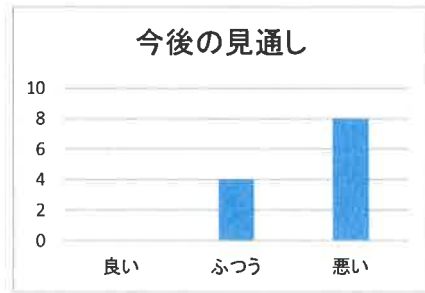
経営課題

需要の低迷	3
同業者との競争激化	3
人材確保難	3
経営者の高齢化	2
原材料の高騰	1
人件費の増加	1
後継者難	1

平成31年度第4回景気動向に関する定点観測
 期間 令和2年3月1日～3月10日

②卸・小売業



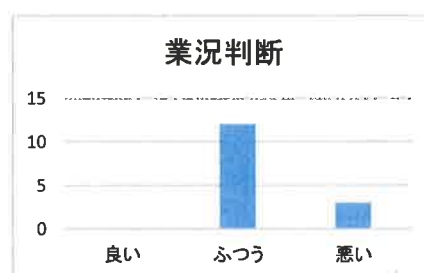
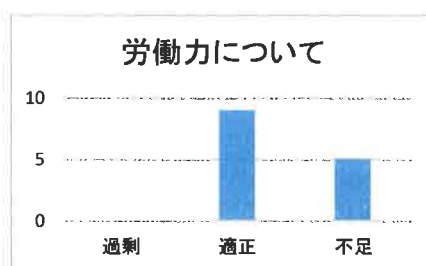
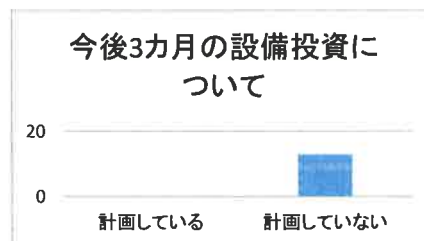
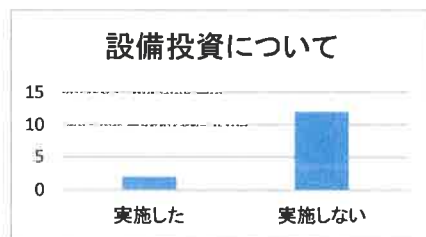
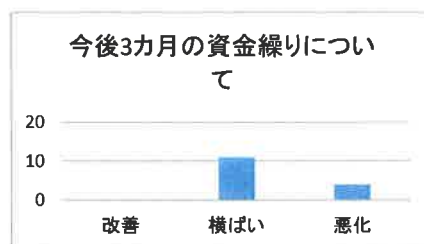
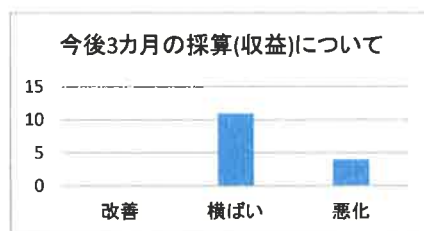
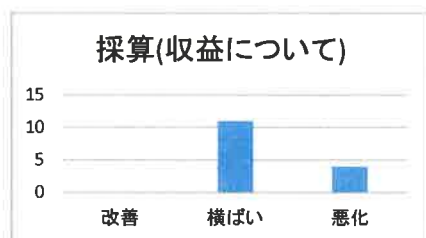
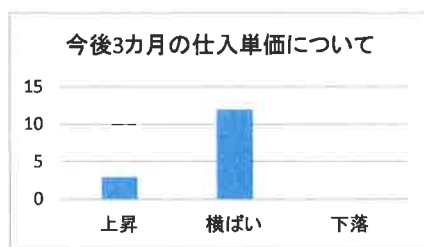
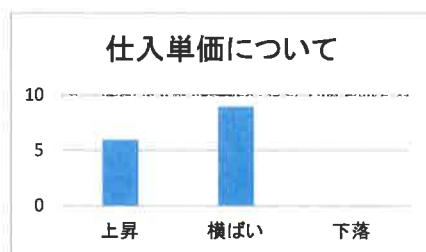
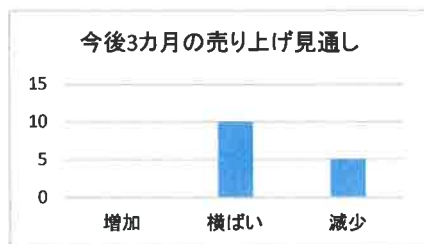
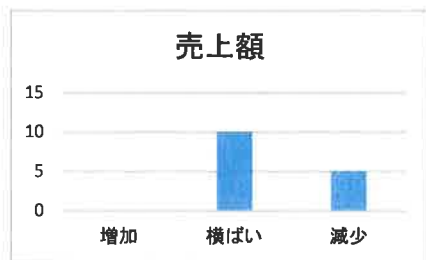


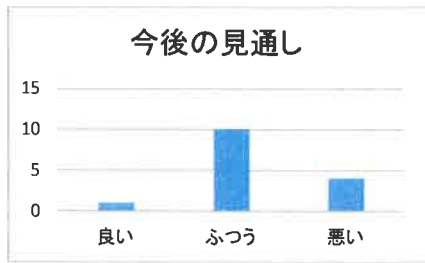
経営課題

人材確保難	2
経営者の高齢化	2
需要の低迷	2
原材料の高騰	1

平成31年度第4回景気動向に関する定点観測
 期間 令和2年3月1日～3月10日

③製造業



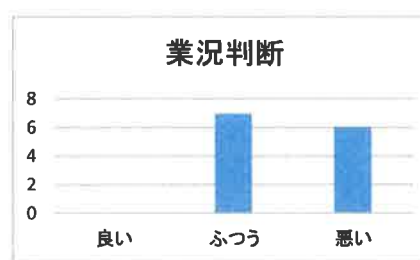
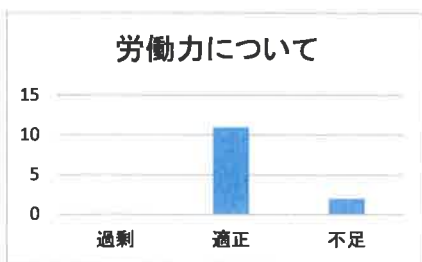
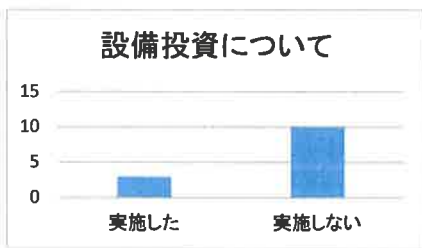
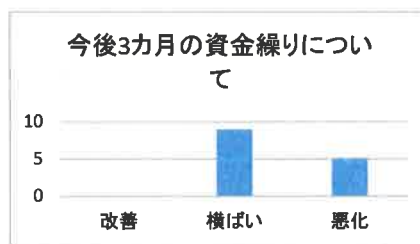
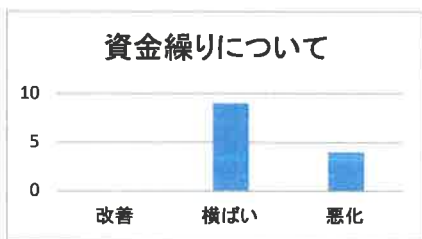
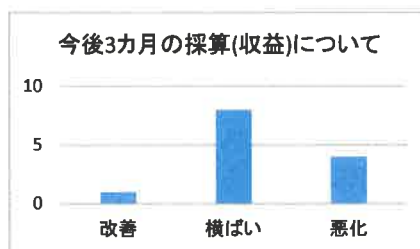
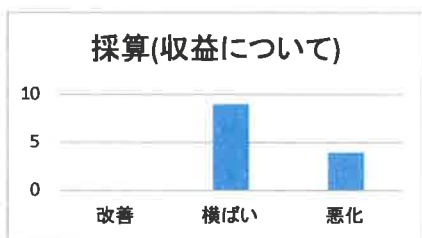
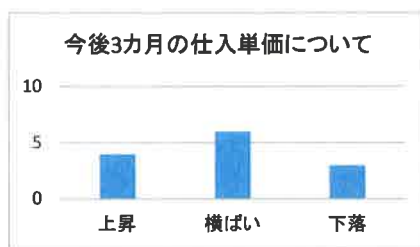
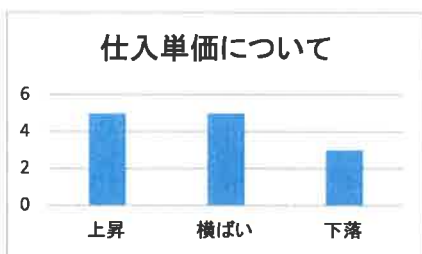
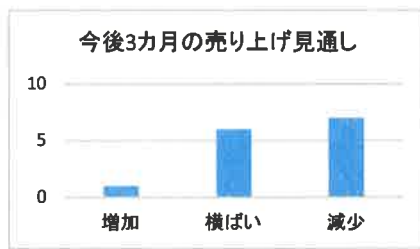
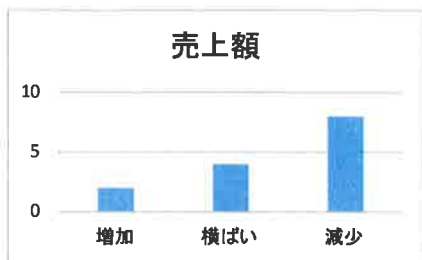


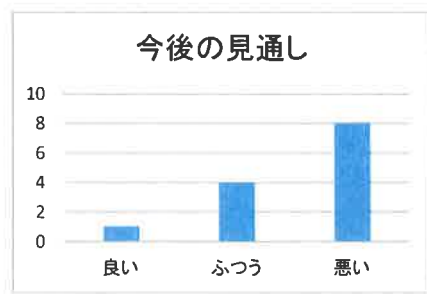
経営課題

需要の低迷	4
経営者の高齢化	3
人材確保難	3
原材料の高騰	2
販売価格の低下	1
人件費の増加	1
後継者難	1

平成31年度第4回景気動向に関する定点観測
 期間 令和2年3月1日～3月10日

④サービス業





経営課題

同業者との競争激化	4
需要の低迷	4
経営者の高齢化	2
後継者難	2
人材確保難	2
原材料の高騰	1